

## UPDATED KGVI ERA POSTAL STATIONERY NO. 2

### ONE PENNY ENVELOPES & LETTERCARDS FORWARDED VIA THE EMPIRE AIR MAIL SCHEME

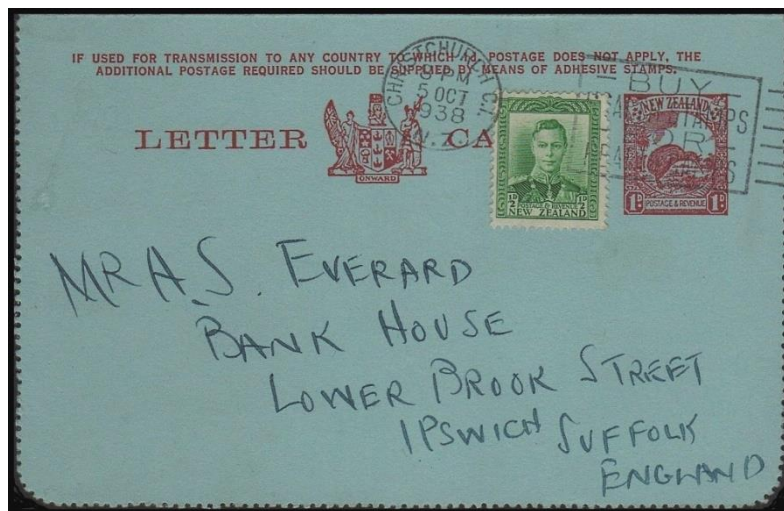
Stephen F Prest and Pat Skinner

An article appearing in the April 2011 issue of the *Mail Coach* described the apparent scarcity of One Penny Postal Stationery Lettercards and Envelopes found uprated with a 1938 KGVI Half Penny Green adhesive stamp affixed to meet to 1½d. “All-up” Empire Air Mail Service (EAMS) rate. During this (EAMS) period, there were two postal stationery lettercards in current use, the 1935 1d. Kiwi Lettercard up to May 4, 1939 and the 1939 1d. George VI Lettercard, issued May 5, 1939 for the balance of the period (September 30, 1939). There were also four postal stationery envelopes in current use during this period, the 1936 1d. George V Envelopes until November 1938 (Commercial and Social sizes produced using the 1d. Australian Note and Stamp Printer Die and the 1938 1d. George VI Envelopes (Commercial and Social sizes) thereafter to September 1939.

The April 2011 article described two examples of the One Penny KGVI Red Postal Stationery uprated with a 1938 KGVI half penny stamp <sup>(1)</sup>. Five other possible combinations were identified in the article and it is only recently that examples of two of the five had come to our attention as described below.

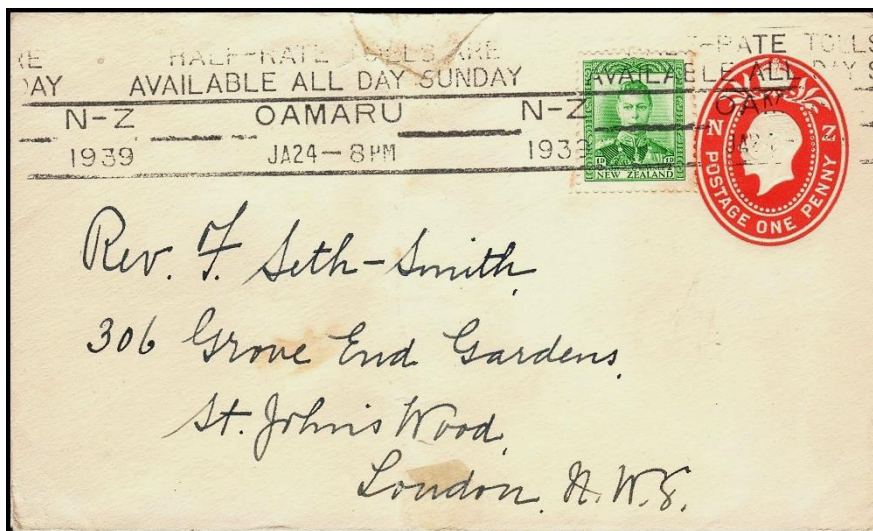
#### **Postal History “Finds” in the Past Year**

Cover 1 described below is a recently acquired 1935 One Penny Kiwi Lettercard. This is the first lettercard we have seen uprated with a half penny stamp to make up the EAMS rate.



*Cover 1: 1935 One Penny Kiwi Lettercard from Christchurch to Ipswich, Suffolk, England uprated with a 1938 ½d. KGVI Green stamp to make up the EAMS rate of 1½d. per half ounce*

Postal History Society NZ member Harold Waite acquired Cover 2 overleaf early this year and has graciously given us permission to include a scanned image of the cover. Again, this is the first time we have seen the 1936 KGV One Penny Red Postal Stationery Envelope uprated with a half penny stamp to make up the EAMS rate.



*Cover 2: 1936 KGV One Penny Postal Stationery Envelope from Oamaru to St John's Wood, London, England uprated with a 1938 1/2d. KGV Green stamp to make up the EAMS rate*

### **Concluding Thoughts**

With the recent discoveries, we have now identified three of the six possible combinations KGV era one penny postal stationery uprated with a half penny stamp to make up the EAMS rate of 1½d. per half ounce. These are highlighted in Table 1 below together with the numbers seen by us over the past decade!

We would be most interested to learn if other members might have any examples of these uprated postal stationery items or one or more of the missing combinations in their collection either via email at [stephen.prest@gmail.com](mailto:stephen.prest@gmail.com) or by regular post through the kind auspices of our Editor.

***Table 1. One Penny Postal Stationery Lettercards & Envelopes uprated for delivery via the "All-up" Empire Air Mail Service (July 26, 1938 - September 30, 1939)***

<b><u>In Period Use between:</u></b>	<b><u>Postal Stationery</u></b>	<b><u>Postage Stamp</u></b>	<b><u>Scarcity (No)</u></b>
July 26, 1938 - May 4, 1939	1d. Kiwi Lettercard	½d. George VI Green	Difficult (1)
May 5, 1939, to Sept 1939	1d. George VI Lettercard	½d. George VI Green	Scarce
July 26, 1938 - Nov 1938	1d. George V Commercial Envelope	½d. George VI Green	Scarce (1)
July 26, 1938 - Nov 1938	1d. George V Social Envelope	½d. George VI Green	Existence ??
Nov 1938 - Sept 1939	1d George VI Commercial Envelope	½d. George VI Green	Difficult (2)
Nov 1938 - Sept 1939	1d George VI Social Envelope	½d. George VI Green	Existence ??

### **Reference:**

- (1) "Uprated KGV Era Postal Stationery No. 1", by S.F. Prest & P.J. Skinner, "The Mail Coach", Vol 47, No. 4, Whole No. 372 (April 2011) pp 128-131