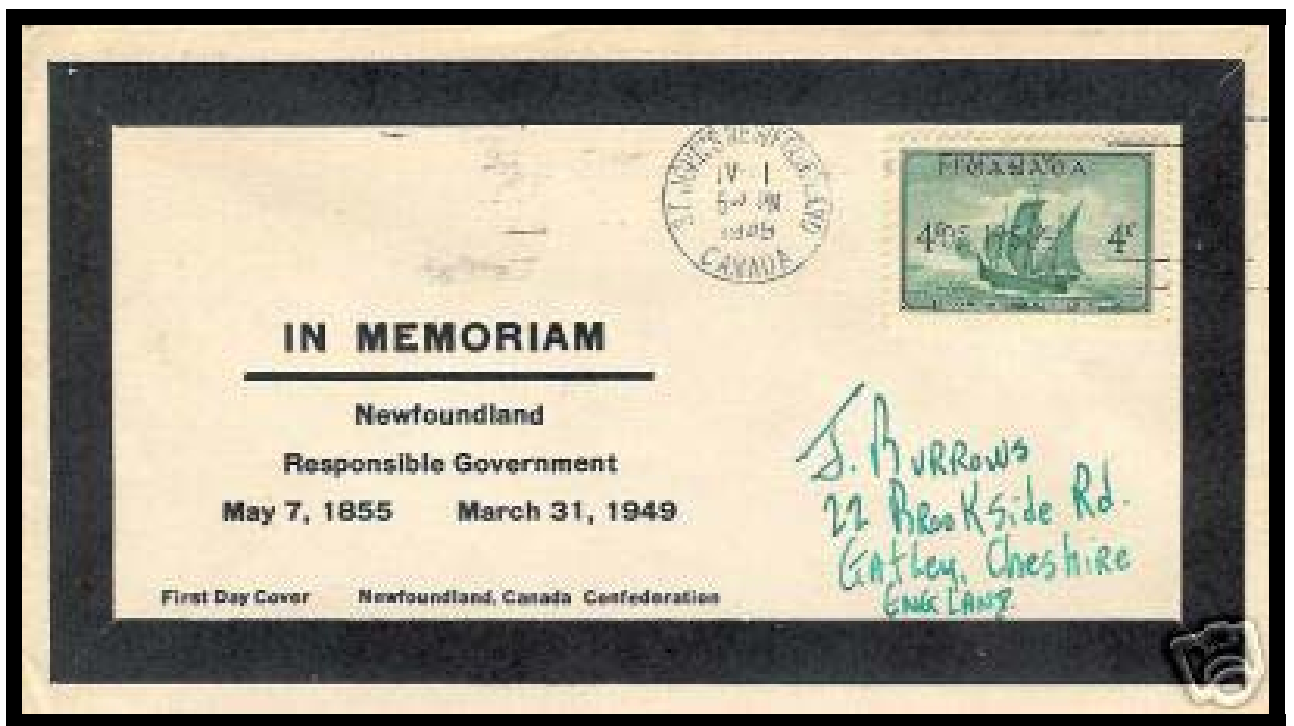


**FIRST DAY COVERS OF THE 1949 CANADA
“NEWFOUNDLAND ENTERS CONFEDERATION” ISSUE**

**by
GARY DICKINSON**



FDC MONOGRAPH NO. 5

EDITION 2

JANUARY, 2008

PREFACE

This is the fifth monograph in a series of six dealing with the First Day Covers of the six commemorative stamps issued by Canada from 1947 to 1949. It is the second edition of the monograph dealing with FDC's of the 1949 "Newfoundland enters Confederation" issue, and as such it incorporates information received from other collectors since the publication of the first edition. The work of Ivan Hebert-Croteau and Bruce Perkins was particularly helpful.

I will continue to appreciate receiving from other collectors scans of FDC's that have been omitted from this monograph or that have been included but not taken directly from original covers. I will add at the earliest possible date any new cachets whose scans are forwarded to me. Similarly, I would appreciate receiving notice of day-of-issue cancellations from locations other than those listed here, and will add them to the list as soon as possible.

I would like to express my great appreciation and thanks to Stephen Prest for his encouragement, support, and assistance in this project as well as in my series of articles on FDC's he has edited for the BNAPS King George VI Study Group Newsletter, the *King George VI Post and Mail*.

Gary Dickinson

gandbdickinson@shaw.ca

INTRODUCTION

This is the fifth in a series of monographs presenting detailed inventories and studies of First Day Covers published for stamps issued during the reign of King George VI. This monograph covers FDC's for the stamp issued on April 1, 1949 to mark the entry of Newfoundland into the Canadian Confederation.

The stamp, Scott No. 282, is shown in Figure 1 below. It was printed by the Canadian Bank Note Company and designed by Herman Herbert Schwartz based on a ship model built by Herbert Ernest Maunder. It was printed in sheets of 200, divided into panes of 50, and perforated 12. Plate numbers 1 and 2 were used and 50,850,000 stamps were printed.



Figure 1. The Newfoundland Enters Confederation Issue.

The dominant feature of the stamp's design, and of several FDC's, is the sailing ship "Matthew," the vessel captained by John Cabot when he set out from Bristol, England. Cabot landed at Cape Bonavista, Newfoundland in June, 1497 and has been acclaimed as the "discoverer" of North America. An article by W. L. Aiken in *BNA Topics* described how the "Matthew" model came to be built by Maunder and ultimately served as the basis for the stamp design.

This issue was the first to be documented by the Canada Post Office Department to determine the number of FDC's they serviced for each issue. Strauss reported in 1959

that 47,588 FDC's had been serviced for the Newfoundland enters Confederation issue.

THE CACHETS

The only prior attempt to document this issue found in the philatelic literature was an article by Melvin Baron in the periodical *First Days* in 1981. Baron identified and described 22 different cachets, five of which were by J. C. Rosenbaum, but he only illustrated six of them in black and white reproductions. He also listed 20 cities and towns which had first day cancellations reported for them. Baron assigned each distinct cachet a unique type number from 1 to 22 even if it differed only slightly from another cachet. The first edition of this monograph showed 66 different cachets and the total increased by 17 (26%) to 83 for this second edition.

The numbering method used in this and other monographs in this series consists of the three-digit Scott catalogue number for the issue (ie. 282) followed by a three-digit major type number (eg. 201) and then a two-digit sub-type number (eg. 04) if applicable. A typical entry would therefore be 282.201.04. This study does not include covers that were cancelled on the first day of issue but involved personal or business correspondence without an explicit first day cachet, although a method of dealing with them is suggested and some examples are shown at the end of the monograph.

The entry of Newfoundland into Confederation was apparently not welcomed universally by Newfoundlanders as the FDC shown on the title page of this monograph clearly shows. In addition to the first day cachets that marked the entry of Newfoundland into Confederation, there were also a number of "last day" cachets produced to observe

the end of Newfoundland's history as a Crown Colony of Great Britain. One such cachet is shown below, but those cachets are otherwise beyond the scope of this study.

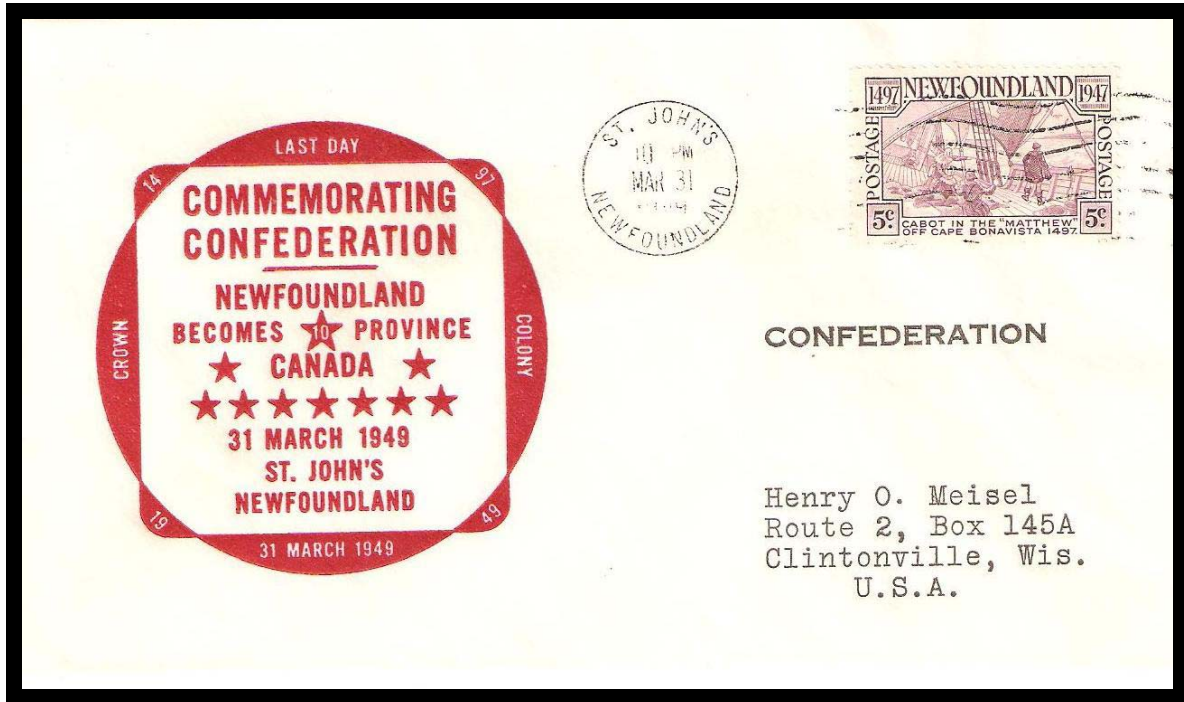


Figure 2. Example of Last Day Cover Designed by Henry Meisel

CACHET DESIGN ELEMENTS

A few common design elements appear on a number of different cachets for the “Newfoundland enters Confederation” issue. As Table I shows, the most common such elements were maps either of Canada or Newfoundland which appeared on nineteen cachets followed by fourteen designs incorporating symbols of the provinces. Animals, most frequently moose, were found on eleven different cachets. A miscellaneous group of ten cachets incorporated such objects as early postage stamps or the sailing ship “Matthew”. Eight of the cachets were general purpose ones used for a variety of stamp issues while sixteen consisted of text only. The categories of design elements were used

to group together cachets with the same theme to make identification and classification of specific FDC's easier for users of this monograph and to facilitate expansion of the inventory as new cachets are identified and added.

TABLE I
CATEGORIES OF CACHETS FOR #282 (NEWFOUNDLAND)

Category	No. of Cachets	First No.
Thematic Categories:		
Map of Canada or Newfoundland	19	282.100
Symbols of provinces	14	282.200
Animals	11	282.300
Miscellaneous themes	10	282.500
Standard Categories:		
Hand-Made	2	282.650
Predominantly text	16	282.800
Rubber stamps	3	282.850
General purpose	8	282.900
Uncacheted FDC's:		
Business cover, typed message	NA	282.994
Business cover, hand-written or printed	NA	282.995
Business cover, FD dated only	NA	282.996
Personal cover, typed message	NA	282.997
Personal cover, hand-written or printed	NA	282.998
Personal cover, FD dated only	NA	282.999
Total	83	

Six categories of uncacheted FDC's are listed in Table I and several examples are shown in the final pages of this monograph. As these covers were not generally produced in quantity, and as many of them may indeed be unique, attempting to classify and

describe them in detail would likely prove unproductive. An approach that collectors might consider, and that is illustrated here, would be to sort them in two stages, first according to their use as a business cover (advertising cover or corner card), or their use for personal correspondence. As a secondary classification, uncacheted covers could be sorted by the type of first-day message they displayed, either typewritten, hand-written or printed, or no message. In every case the covers concerned would have a first day cancellation to warrant classification as a FDC. For inventory purposes, each uncacheted cover could be assigned a unique identification number by the collector. For example, the third FDC among several personal-use covers with a hand-written “First Day of Issue” message would be identified in that collection as 282.998.03.

DAY OF ISSUE LOCATIONS

St. John’s was designated the official first day of issue city, and for the first time, the Canada Post Office used a special postmark for the FDC. It included the words “FIRST DAY/ OF ISSUE” (in English only) plus two short and two long horizontal bars, as shown in Figure 3, and this cancellation was used only in St. John’s with the time marks 9:30 a.m. and 5:30, 7, 9:30, and 10 p.m.. In 1981 Baron listed a total of 20



**Figure 3 Official First Day of Issue Cancellation
Used in St. John's, NL**

locations with first day cancellations, but the number of different first day locations has subsequently increased to 55 as shown in the following alphabetical listing. St. John's had three different cancellations and three locations had two different cancellations. Sixteen of the reported first day locations were in Newfoundland.

TABLE II
FIRST DAY CANCELLATIONS ON #282 COVERS

LOCATION	PROVINCE	CDS	DUPLEX	SPLIT CIRCLE	MACHINE	SLOGAN
Argentia	NL	X				
Arnprior	ON	X				
Barrie	ON					
Batawa	ON	X				
Bowaters Cornerbrook	NL	X				
Brantford	ON		X			
Brantford Grandview	ON	X				
Calgary	AB	X				
Carbonear	NL	X				
Chatham	ON	X				
Conception	NL			X		
Cornerbrook	NL	X			X	
Curling	NL			X		
Deer Lake	NL	X				
Deer Lake Forward	NL	X				
Edmonton	AB	X				X Canadian Int.
Edmonton Sub.20	AB	X				
Flesherton	ON	X				
Greenville	ON			X		
Halifax	NS					X Give to Con.
Hamilton	ON					X Give to Con.
Harbour Main	NL					
Heart's Desire	NL			X		
House of Commons	ON	X				
Innerkip	ON		X			
Kingston	ON	X				
Kirkland Lake	ON				X	
Kitchener	ON	X				
Lewisporte	NL			X		
London	ON					X Give to Con.
Montreal	QC	X			X	X Eat Right....

Montreal (St. B)	QC	X				
Montreal (Sub. 111)	QC					
Moose Jaw	SK					
Niagara Falls	ON					
New Westminster	BC					X Give to Con.
Ottawa	ON				X	
Ottawa (Sub. 7)	ON	X				
Port Arthur	ON				X	
Regina	SK					X Canadian Int.
Robinsons Station	NL	X				
Sandy Point	NL			X		
St. John's	NL	X	X			X First Day....
St. Thomas	ON				X	
Topsail	NL			X		
Toronto	ON				X	
Toronto Earl's Court	ON					
Toronto Station B	ON	X				
Twillingate	NL	X				
Vancouver	BC	X			X	
Victoria	BC					X Give to Con.
Vineland	ON	X				
Waterloo	ON		X			
Windsor	ON					
Winnipeg	MB					X Help the Red

Note: First day cancellations have been reported for some locations without mentioning the type.

REFERENCES

Aiken, W. L. "The Story of a Postage Stamp: The Four Cent Canada Showing Cabot's Ship the "Matthew", April 1, 1949." *BNA Topics*, Vol.14, No. 4 (April, 1957), pp. 114-115.

Baron, Melvin L. "FDC's of the Canadian Post Issues of 1940-1950: Part VI—Sc. 282—Union of Newfoundland Commemorative Issue of 1949." *First Days*, Vol. 26, No. 4 (July-August, 1981), pp. 581-583.

Perkins, B. G. "Canada First Day Cover Cachet/Catalogue 1947-1959." Unpublished Manuscript, March, 1992.

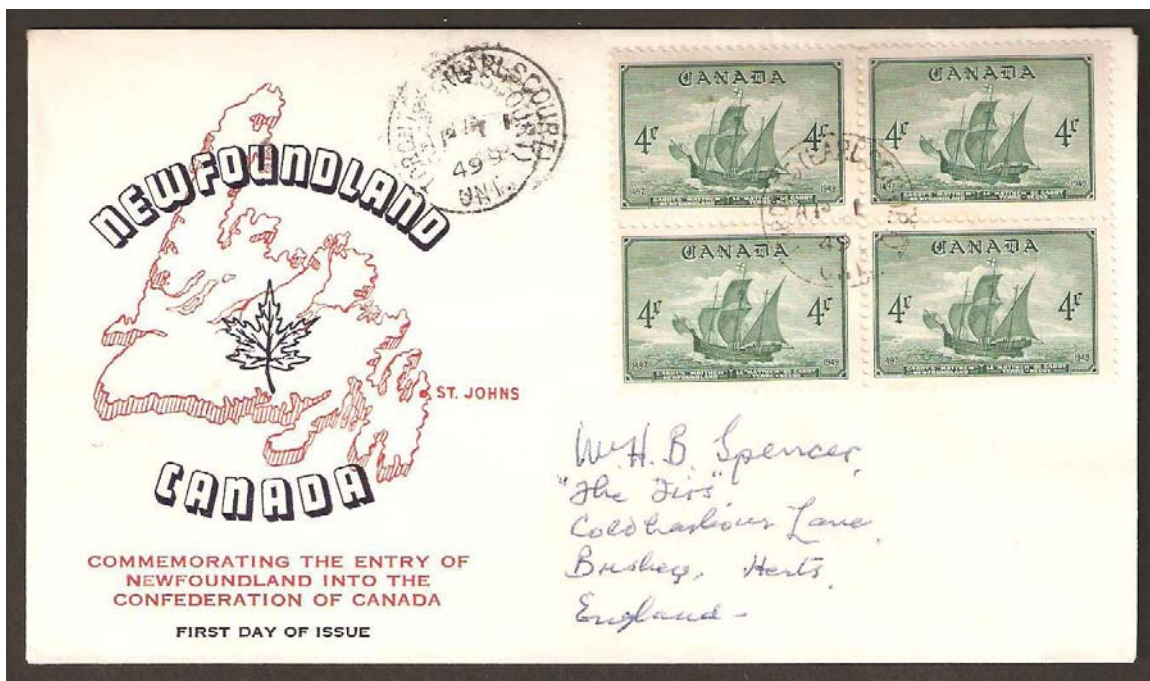
Strauss, Gerald H. "Canadian FDC Sales Figures." *First Days*, Vol. 4, No. 6 (July-August, 1959), p. 9.

FDC No.: 282.101

Cachet By: Unknown

Description: This red and black cachet shows an outline map of Newfoundland with St. John's identified and an outlined maple leaf at the centre of the island. The words "Newfoundland" and "Canada" are arched at the top and bottom of the new Province. Text at the bottom of the cachet reads, "COMMEMORATING THE ENTRY OF/ NEWFOUNDLAND INTO THE/ CONFEDERATION OF CANADA/ FIRST DAY OF ISSUE." This cachet was Baron's Type 10.

Photo:



FDC No.: 282.102.01

Cachet By: Jacobi

Description: There was a lengthy series of Jacobi cachets for this issue. Some were in a single colour, some in two colours, and others in several colours. Shown first is a red version of the cachet. The design features an outline map of Newfoundland at the centre, with a double-circle border. The circle is flanked by a lion and unicorn holding flags, elements from the Canadian Coat of Arms, as are the elements at the top of the circle. Below the central circle is a maritime scene reflective of the new Province. Baron was only familiar with two cachets in this series and this one was assigned Type 13.

Photo:



FDC No.: 282.102.02

Cachet By: Jacobi

Description: This cachet has the same design as the previous one, but is dark blue in colour.

Photo:



FDC No.: 282.102.03

Cachet By: Jacobi

Description: Here is a green version of this cachet.

Photo:



FDC No.: 282.102.04

Cachet By: Jacobi

Description: The final single-colour Jacobi cachet for this issue is black and was assigned Type 12 by Baron.

Photo:



FDC No.: 282.102.05

Cachet By: Jacobi

Description: This cachet has the same design as the single-coloured variations but has a black central portion and a red vertical band at the top and bottom.

Photo:



FDC No.: 282.102.06

Cachet By: Jacobi

Description: This variation has a black central portion and a green vertical band.

Photo:

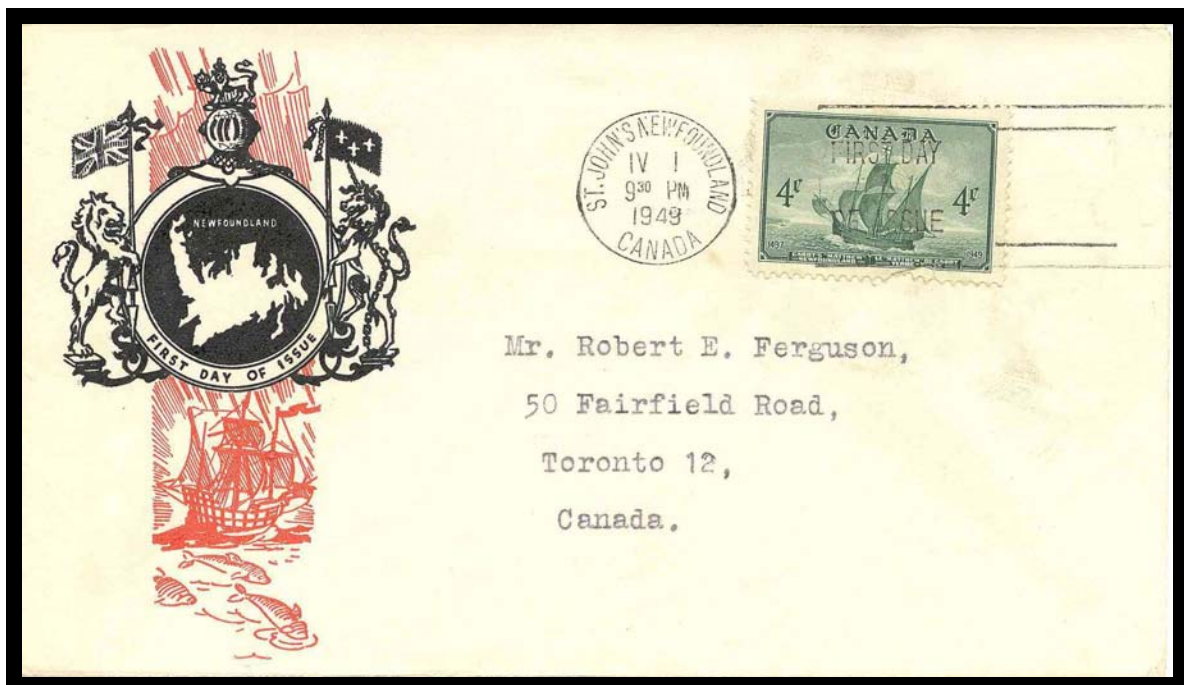


FDC No.: 282.102.07

Cachet By: Jacobi

Description: This two-coloured cachet in the Jacobi series had a black central portion and an orange vertical band.

Photo:



FDC No.: 282.102.08

Cachet By: Jacobi

Description: This version of the Jacobi cachet has black, green, red, and brown colouring.

Photo: This is a second-generation scan from an Internet image.



FDC No.: 282.102.09

Cachet By: Jacobi

Description: This multi-coloured version of the Jacobi cachet appears to be self-addressed and hand-painted for a beautiful presentation.

Photo:

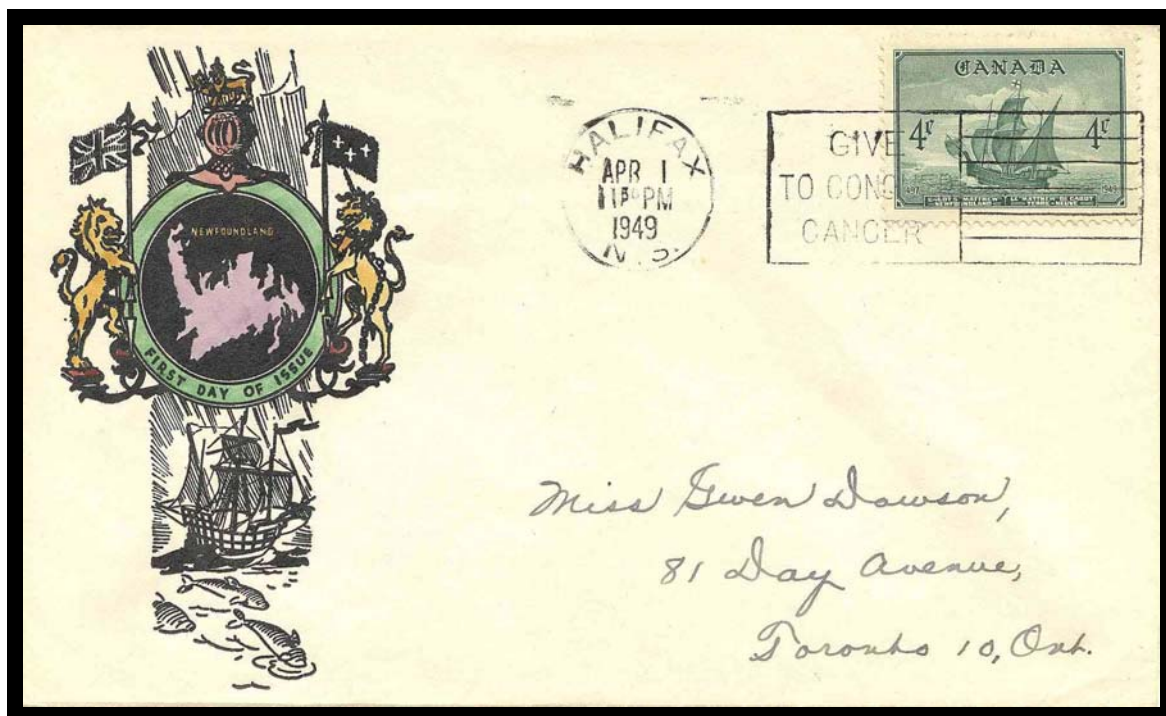


FDC No.: 282.102.10

Cachet By: Jacobi

Description: Here is another hand-painted version of the Jacobi cachet.

Photo:



FDC No.: 282.102.11

Cachet By: Jacobi

Description: Here is a hand-coloured version of the Jacobi cachet.

Photo:



FDC No.: 282.103.01

Cachet By: Unknown

Description: This cachet shows an outline map Newfoundland, with "rador" (Labrador) appearing at the top and Nova Scotia at the bottom. The frame and map are in blue with red text at the bottom reading, "To Commemorate the Union of Newfoundland/with Canada as the 10th Province." Baron assigned Type 17 to this cachet.

Photo:



FDC No.: 282.103.02

Cachet By: Unknown

Description: This cachet is the same design as the previous one except that the printing at the bottom of the frame is maroon rather than red. This was identified by Baron as Type 18.

Photo:

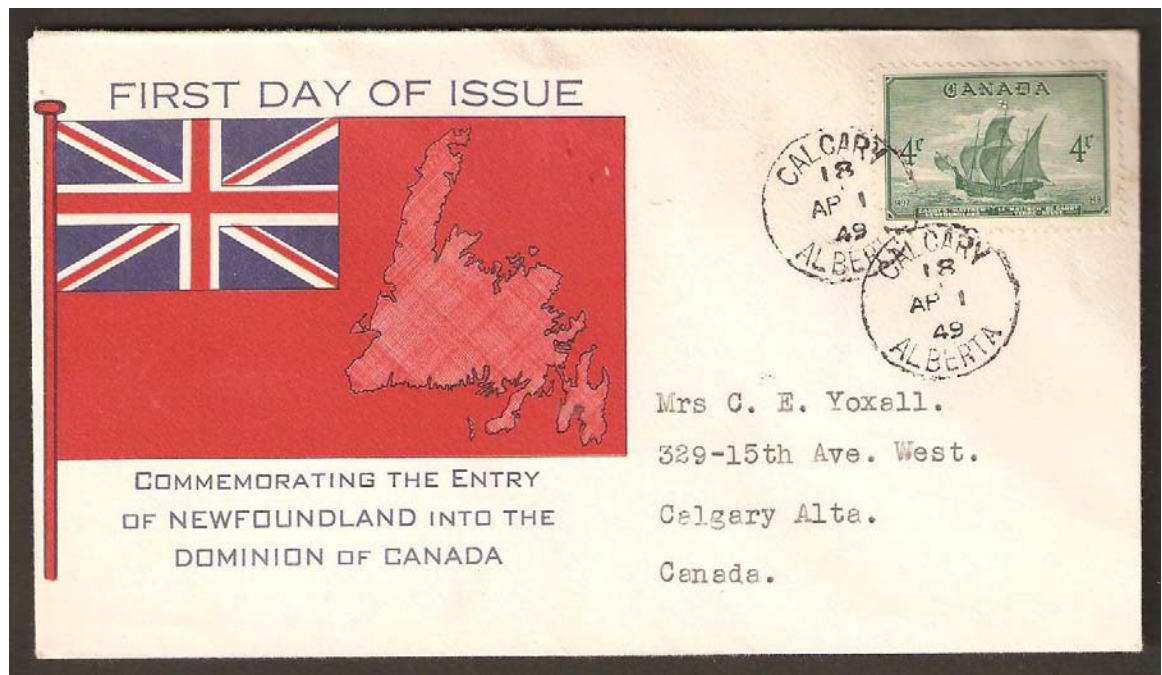


FDC No.: 282.104.01

Cachet By: Unknown

Description: This cachet in blue and red features the Union Jack in the upper left corner of a red flag which contains an outline map of Newfoundland. Text above the flag is, "FIRST DAY OF ISSUE" while below the flag it reads, "COMMEMORATING THE ENTRY/ OF NEWFOUNDLAND INTO THE/ DOMINION OF CANADA."

Photo:



FDC No.: 282.104.02

Cachet By: Unknown

Description: This cachet is identical to the preceding one except that there is a 14 x 41 mm. yellow rectangle below the flag.

Photo:

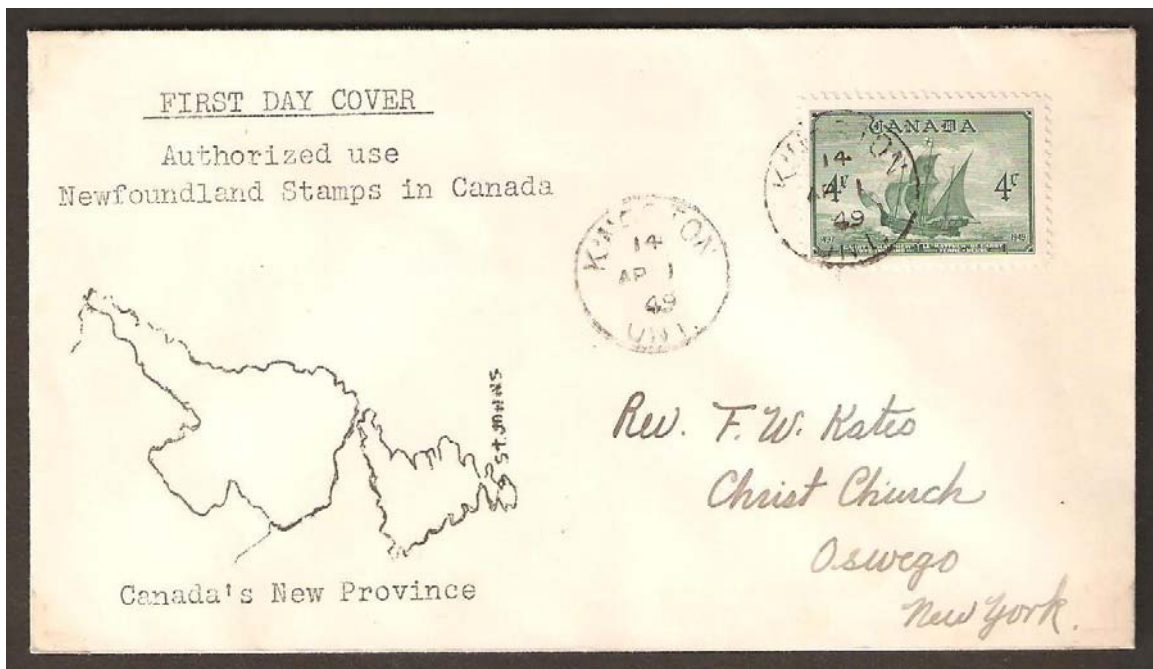


FDC No.: 282.105

Cachet By: Unknown

Description: Mimeograph appears to have been the production method for this cachet which contains a rough outline map of Newfoundland and Labrador. Text above the map reads, "FIRST DAY COVER/ Authorized use/ Newfoundland Stamps in Canada" while text below it is, "Canada's New Province."

Photo:



FDC No.: 282.106

Cachet By: Unknown

Description: This grey and black cachet features a detailed map of Newfoundland within a circle. Lettering at the top of the circle has the name of the province while at the bottom it is "FIRST DAY COVER."

Photo:

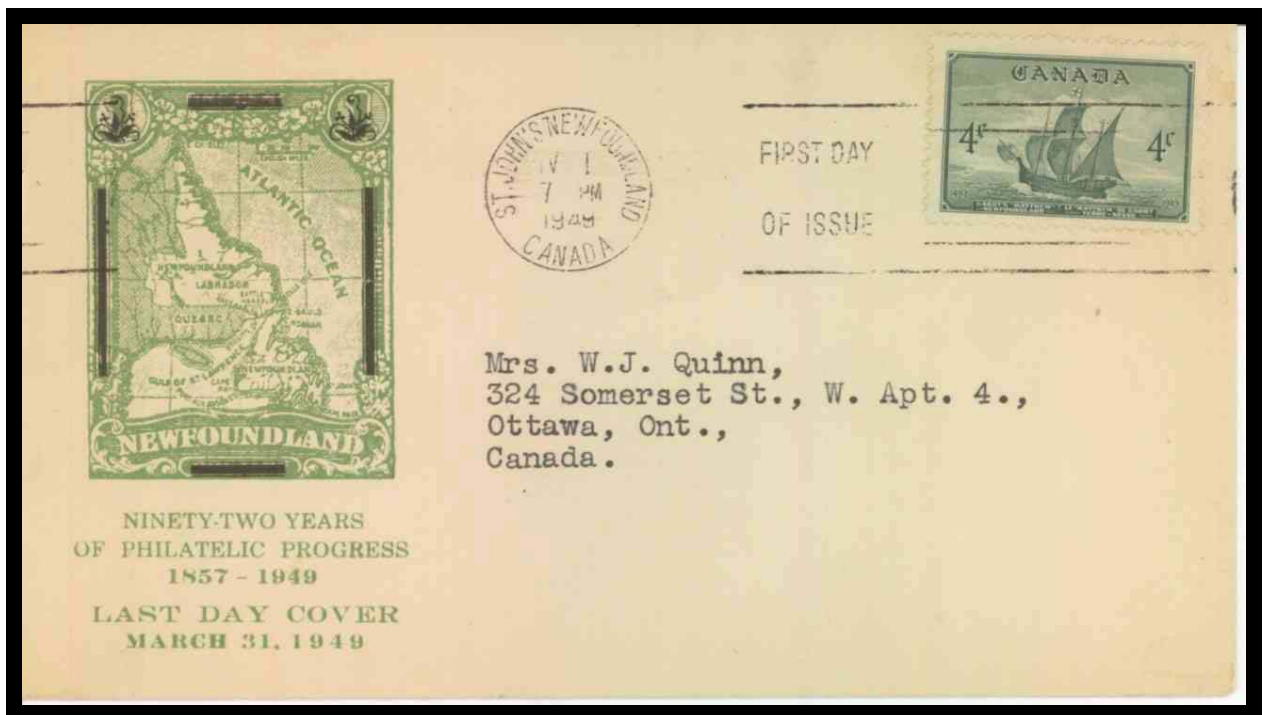


FDC No.: 282.107

Cachet By: Unknown

Description: This is actually a “last day” cachet for Newfoundland stamps used as a first day cover for Canada #282. The green cachet features a rendering of Newfoundland Scott No. 172 along with the text, “NINETY-TWO YEARS/ OF PHILATELIC PROGRESS/ 1857-1949/ LAST DAY COVER/ MARCH 31, 1949.”

Photo:



FDC No.: 282.201.01

Cachet By: JCR (J. C. Rosenbaum)

Description: This is the first in a series of cachets with a common design but different colour combinations produced by J.C. Rosenbaum for this issue. The design features a border comprised of chains linking ten leaves, each named for a Province of Canada. The interior shows seven lines of text as follows: "FIRST DAY ISSUE/ CANADA/ WELCOMES/ Newfoundland [in script]/ INTO/ CONFEDERATION/ MARCH 1ST 1949." The example shown below with green graphics and brown text was Baron's Type 1. He also listed Type 2 which was described as having "dark brown printing," but that cachet is not listed here pending confirmation that it is sufficiently distinct from the one shown here to warrant a separate listing.

Photo:



FDC No.: 282.201.02

Cachet By: JCR (J. C. Rosenbaum)

Description: This JCR variation has a green frame with dark blue text, and was
Baron's Type 3.

Photo:



FDC No.: 282.201.03

Cachet By: JCR (J. C. Rosenbaum)

Description: This cachet listed as Type 4 by Baron shows a reversal of the colours on Type 1, with a brown frame and green text. Baron's Type 5 was described as the same cachet as this one but with "darker green printing." That cachet is not listed here pending confirmation that it is sufficiently different from the one shown here to warrant a separate listing.

Photo:



FDC No.: 282.201.04

Cachet By: JCR (J. C. Rosenbaum)

Description: A further variation of the JCR cachet shows the frame in brown and the text in black.

Photo:



FDC No.: 282.201.05

Cachet By: JCR (J. C. Rosenbaum)

Description: This variation of the JCR cachet has the frame in dark green and the text in red.

Photo:



FDC No.: 282.201.06

Cachet By: JCR (J. C. Rosenbaum)

Description: This cachet varies from the previous one only in the green colour which has a slightly brighter tone.

Photo:

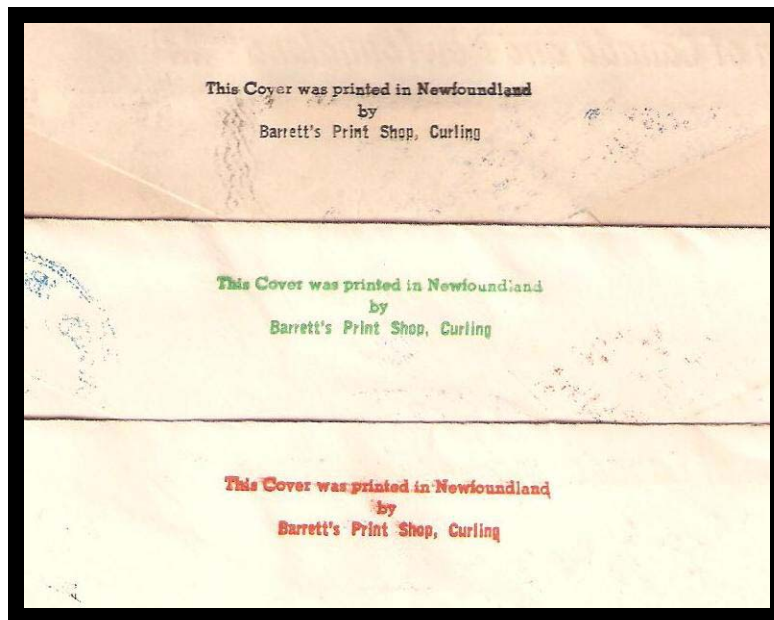


FDC No.: 282.202

Cachet By: Barrett's Print Shop

Description: The following series of five cachets printed in Curling, Newfoundland has a number of minor variations in colouring although the basic design of each is the same. The front of each cover is shown in the succeeding pictures, and below is shown the three colour variations (green, black, and orange) of the printing on the back flap of the envelopes: "This Cover was printed in Newfoundland/ by/ Barrett's Print Shop, Curling."

Photo:



FDC No.: 282.202.01

Cachet By: Barrett's Print Shop

Description: This is an orange, blue, and green cachet showing provincial coats of arms with intertwined maple leaves in the background. Green printing above the graphic design reads, "Confederation of Canada and Newfoundland March 31 1949" while blue printing below it says "FIRST DAY COVER." The back flap of the cover bears the notation in black. Note that on this variation there is no further printing below the design, and the cachet has three colours.

Photo:



FDC No.: 282.202.02

Cachet By: Barrett's Print Shop

Description: This variation of the Barrett's cachet is still rendered in three colours but has additional text in orange at the bottom of the cover reading, "First Canadian Stamp issued in Newfoundland." Otherwise, the cover is the same as the previous version. The notation on the back is in black.

Photo:



FDC No.: 282.202.03

Cachet By: Barrett's Print Shop

Description: This variation of the Barrett's cachet adds a red coloration on one of the coats of arms but is otherwise the same as the previous cachet. The notation on the back is in black.

Photo:

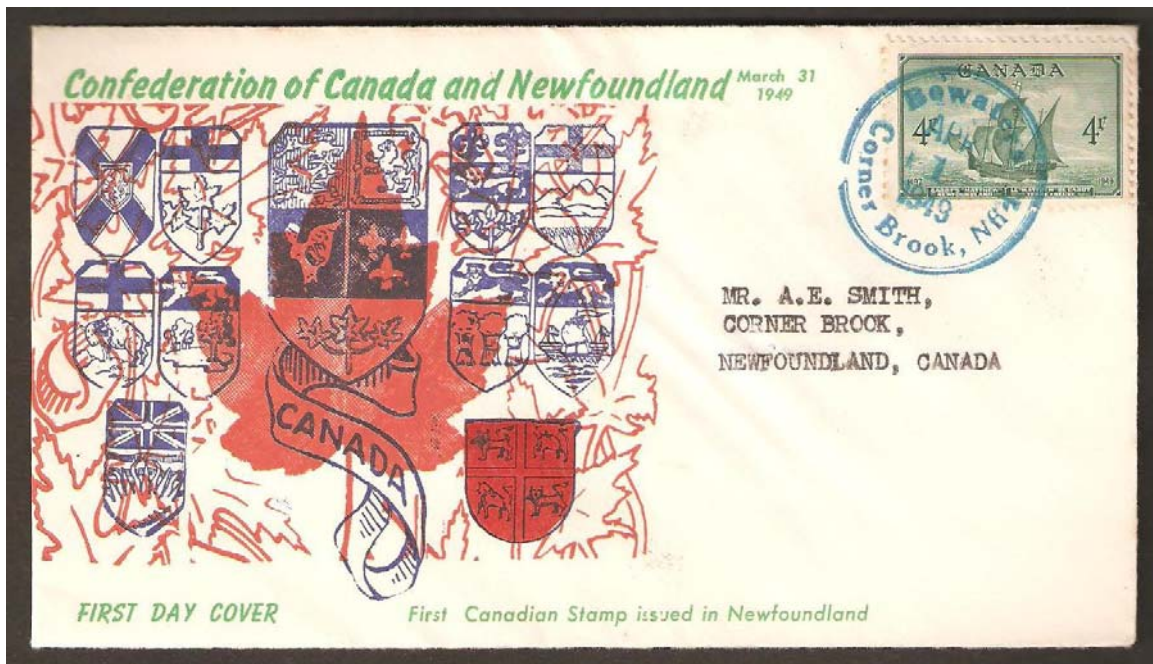


FDC No.: 282.202.04

Cachet By: Barrett's Print Shop

Description: This version of the Barrett's cachet is the same as the previous one, except that the bottom line of printing is green rather than orange, and the printing on the back flap is green rather than black.

Photo:



FDC No.: 282.202.05

Cachet By: Barrett's Print Shop

Description: This cachet is identical to the previous one on the front, however the printing on the back flap is orange.

Photo:



FDC No.: 282.203.01

Cachet By: Canadian Philatelic Society

Description: This blue and black cachet features a wheel of provincial flags surrounding the Great Seal of Newfoundland which was given royal approval in 1827. Text below the wheel reads "CANADIAN PHILATELIC SOCIETY/ OFFICIAL FIRST DAY COVER." This cachet was Baron's Type 8.

Photo:

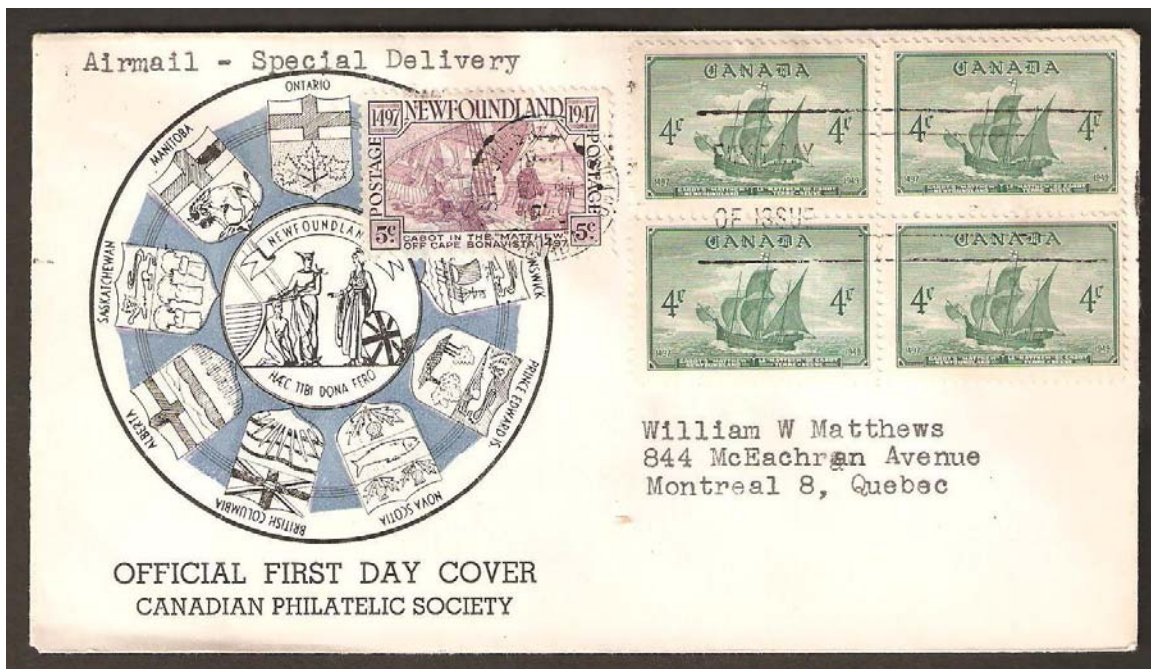


FDC No.: 282.203.02

Cachet By: Canadian Philatelic Society

Description: This variation of the CPS cachet is the same as the previous one but the two lines of text are reversed with the Society name at the bottom.

Photo:



FDC No.: 282.203.03

Cachet By: Canadian Philatelic Society

Description: The CPS is not identified as the producer of this cachet, but the graphic elements are the same as the previous two. The next below the wheel indicates, "NEWFOUNDLAND/ COMMEMORATIVE" with "FIRST DAY COVER" underlined.

Photo:



FDC No.: 282.301.01

Cachet By: Unknown

Description: This cachet features an elk's head in the foreground with a maple leaf in the background. Text at the top is, "POSTED ON DAY OF ISSUE," while text beneath the graphic is, "TO COMMEMORATE THE/ ENTRY OF NEWFOUNDLAND/ INTO CONFEDERATION/ WITH CANADA." Baron assigned Type 14 to this cachet.

Photo:



FDC No.: 282.301.02

Cachet By: Unknown

Description: This cachet has the same design as the previous one, but it has been hand-painted in red, green, yellow, and brown.

Photo:



FDC No.: 282.302.01

Cachet By: Unknown

Description: This brown and yellow cachet features a moose head within a circle, with a maple leaf behind. Text at the top reads, "Union of Newfoundland/ with Canada" while the bottom line is, "Commemorative Cover." This was Baron's Type 15.

Photo:



FDC No.: 282.302.02.

Cachet By: Unknown

Description: This is the same design as the previous cachet, however the leaf is brown rather than yellow.

Photo:



FDC No.: 282.302.03

Cachet By: Unknown

Description: This variation of the previous cachet has slight differences in text. Above the graphic there are three lines instead of two, with the same wording. Below the graphic a date "April 1, 1949" is added below "Commemorative Cover." Baron assigned Type 16 to this cachet.

Photo:



FDC No.: 282.303

Cachet By: Unknown

Description: Here is a red and blue cachet showing the Newfoundland Coat of Arms above a moose head. A banner with "NEWFOUNDLAND" partially encircles the moose's neck. Text beneath the Coat of Arms reads, "UNION WITH CANADA" while at the bottom of the cover the text is, "THE TENTH PROVINCE/ Commemorative Cover [in italics]."

Photo:



FDC No.: 282.304

Cachet By: Unknown

Description: The border of this all-over cachet has stylized leaves in red on all four sides and a moose in black. "CANADA" is printed vertically to the left of the moose while text above it is, "Unity is Strength" [in italics]. Beneath the moose is printed, "Newfoundland [in italics]/ Commemorative Cover."

Photo:



FDC No.: 282.305

Cachet By: C. W. George

Description: This cachet, Baron's Type 6, is in red, green, and brown and shows a moose in the foreground with a leaf in the background. The text reads, "COMMEMORATING/ THE UNION OF/ CANADA/ and/ NEWFOUNDLAND/ FIRST DAY OF ISSUE."

Photo:



FDC No.: 282.306.01

Cachet By: Unknown

Description: This black and yellow-brown cachet shows a beaver shaking paws with a Newfoundland dog. Text above the scene is, "Industry and Courage" / for a Better Canada / and a / Greater Newfoundland" while "Commemorative Cover" appears below it. This cachet was Baron's Type 19.

Photo:



FDC No.: 282.306.02

Cachet By: Unknown

Description: This cachet has the same design as the previous one, but the coloured shading on the beaver and the splash between the beaver and the dog is an orange-brown rather than a yellow-brown.

Photo:

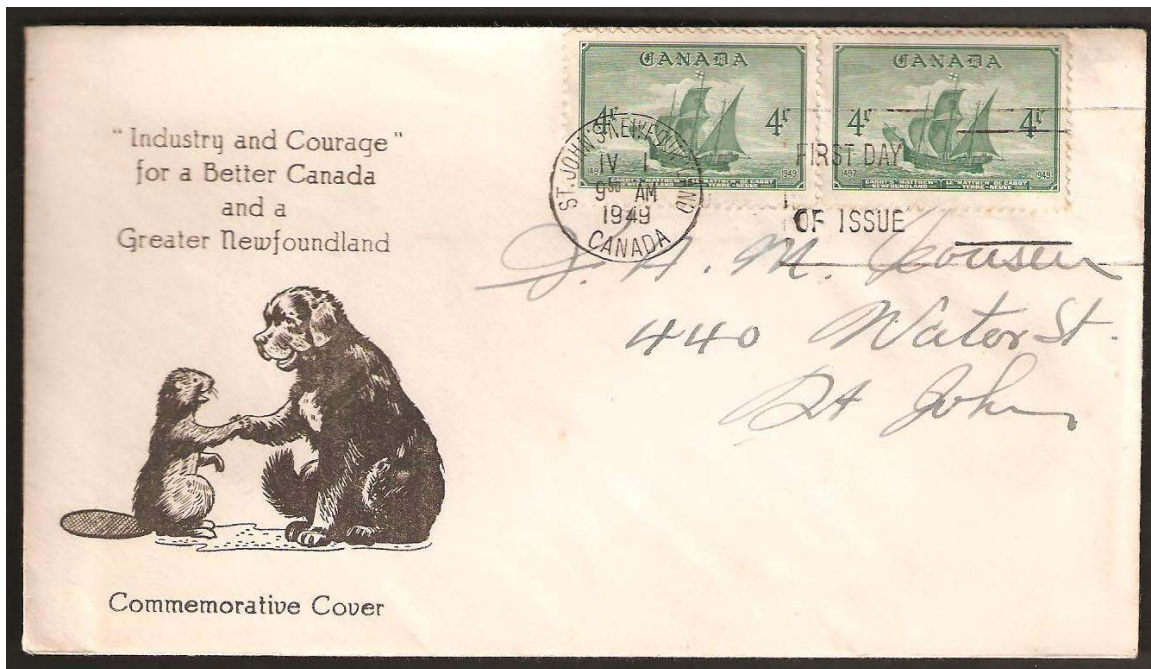


FDC No.: 282.306.03

Cachet By: Unknown

Description: This is an all-black version of the previous two cachets.

Photo:



FDC No.: 282.501

Cachet By: Fulton

Description: This green cachet, Baron's Type 7, is in the form of a medallion with no text beyond the "CANADA-NEWFOUNDLAND/ 19 49" appearing on the medallion. Two clasped hands are at the bottom of the design, with provincial and Newfoundland Coats of Arms above that. An allegorical figure walking on clouds and holding a scrolled map of Canada forms the central part of the medallion.

Photo:



FDC No.: 282.502

Cachet By: Unknown

Description: Four early stamps of Canada and Newfoundland are shown on this cachet in red and green. Text at the top is, "DAY OF ISSUE" while underneath the graphics it reads, "Confederation [in script]/ CANADA-NEWFOUNDLAND/ April 1, 1949 [in script]."

Photo:



FDC No.: 282.503.01

Cachet By: The initials HM are beneath the stern of the ship and may be those of the cachet maker, possibly Henry Meisel. Cachet 282.804 is a Meisel product and the type faces on the addresses of that cover and this one appear to be the same, suggesting a common source.

Description: This green cachet shows the Matthew inside a double circle. The outer ring of the circle contains the words, "CANADA WELCOMES NEWFOUNDLAND" while the inner ring has, "FIRST DAY COVER-APR 1, 1949."

Photo:



FDC No.: 283.503.02

Cachet By: Henry Meisel

Description: This cachet has the same design as the previous one but it is printed on a No. 10 envelope.

Photo:

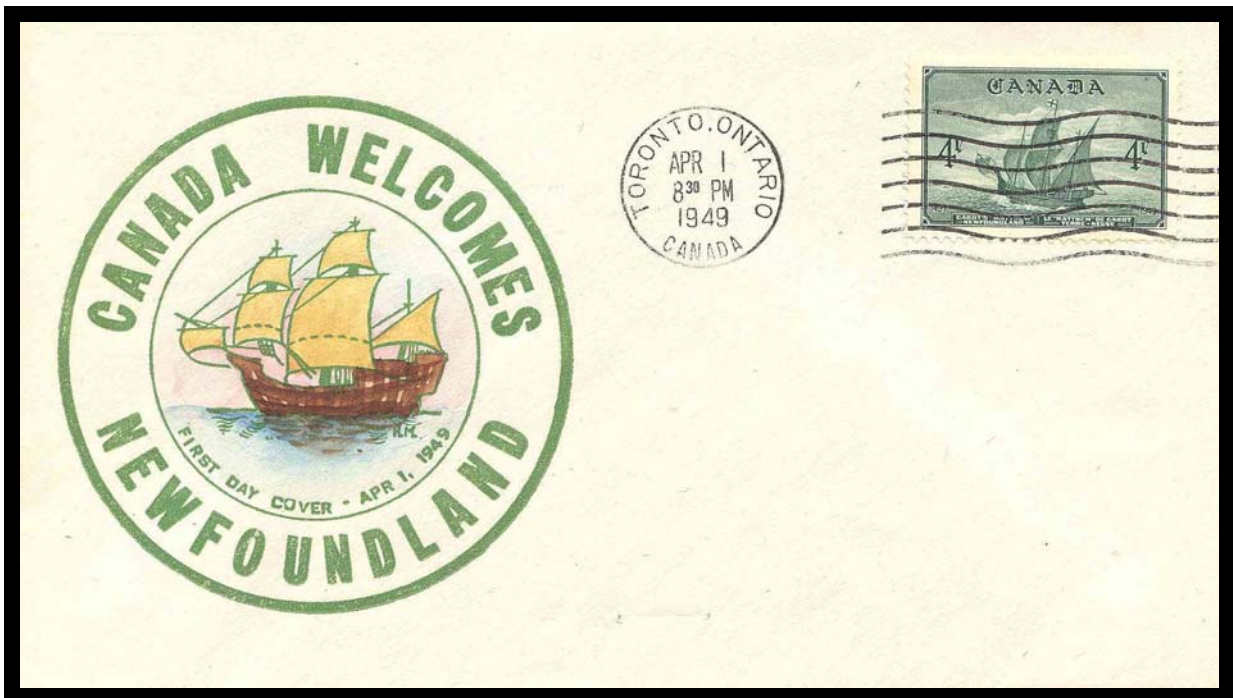


FDC No.: 283.503.03

Cachet By: Henry Meisel

Description: Here is a further variation of this cachet with a hand-painted centre portion.

Photo:

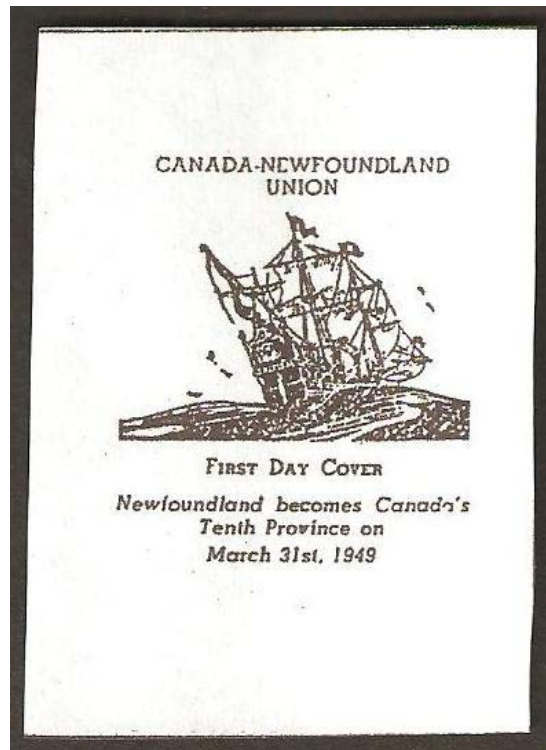


FDC No.: 282.504

Cachet By: Unknown

Description: This cachet, Baron's Type 22, has printing above the design reading, "CANADA NEWFOUNDLAND/ UNION." Printing below the design reads, "FIRST DAY COVER. Newfoundland becomes Canada's/ Tenth Province on/ March 31st, 1949."

Photo:



FDC No.: 282.505.01

Cachet By: Michael Sanders

Description: This Sanders thermographed cachet features a brown maple leaf with black lettering superimposed. The text reads, "issued to/ commemorate/ the entry of/ NEWFOUNDLAND/ into Canadian Confederation/ First Day/ of Issue/ April 1st/ 1949."

Photo:

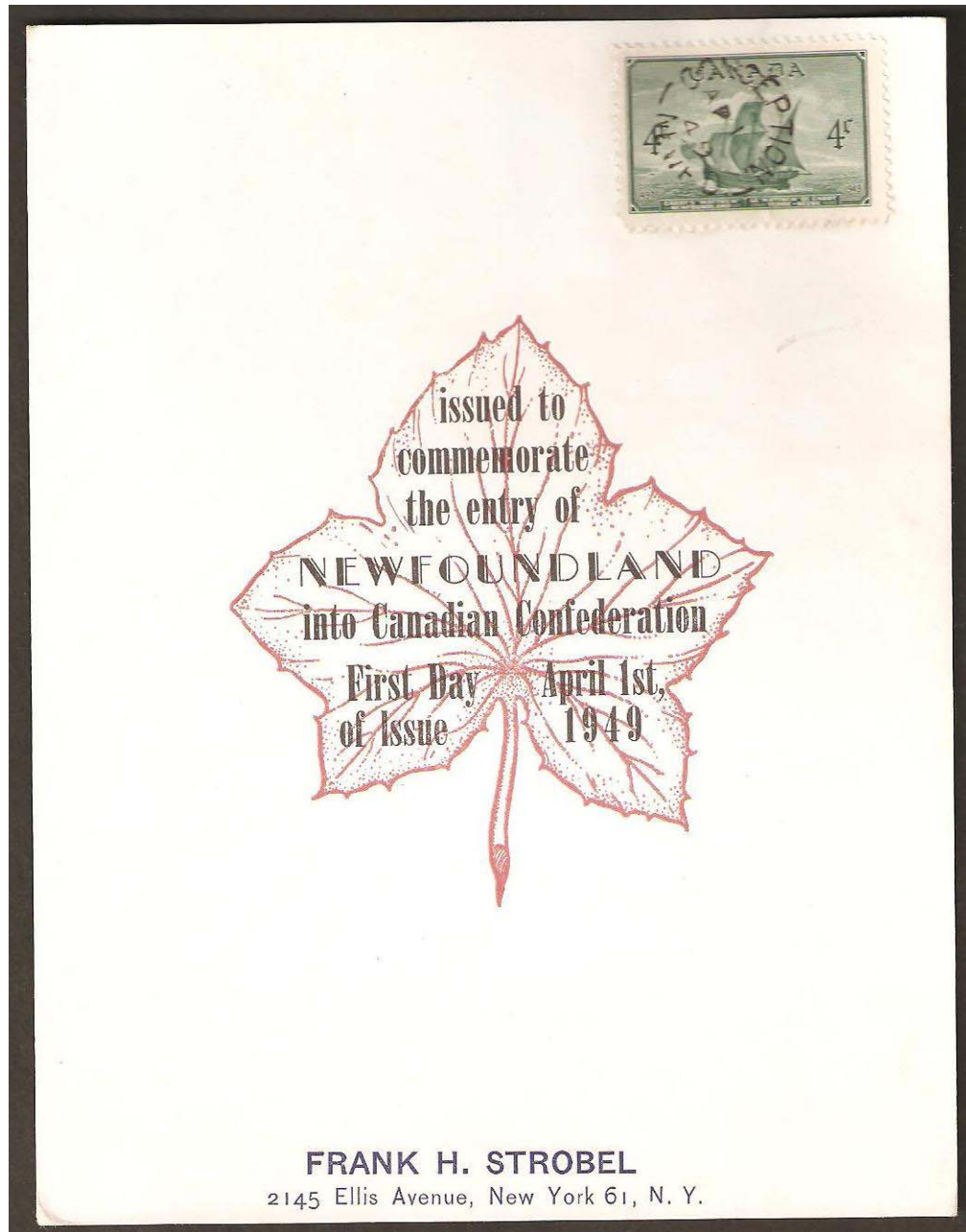


FDC No.: 282.505.02

Cachet By: Michael Sanders

Description: The leaf on this Sanders souvenir card is pink rather than brown, which differentiates this cachet from the previous one. The text is the same on both items. The souvenir card is blank on the reverse side. The same card is also known with Sanders own address printed on it.

Photo:



FDC No.: 282.506

Cachet By: Unknown

Description: Here is a black cachet showing Canada's Coat of Arms. Above the illustration is, "FIRST DAY COVER" while below it the text is, "Union of Newfoundland/ With Canada."

Photo:

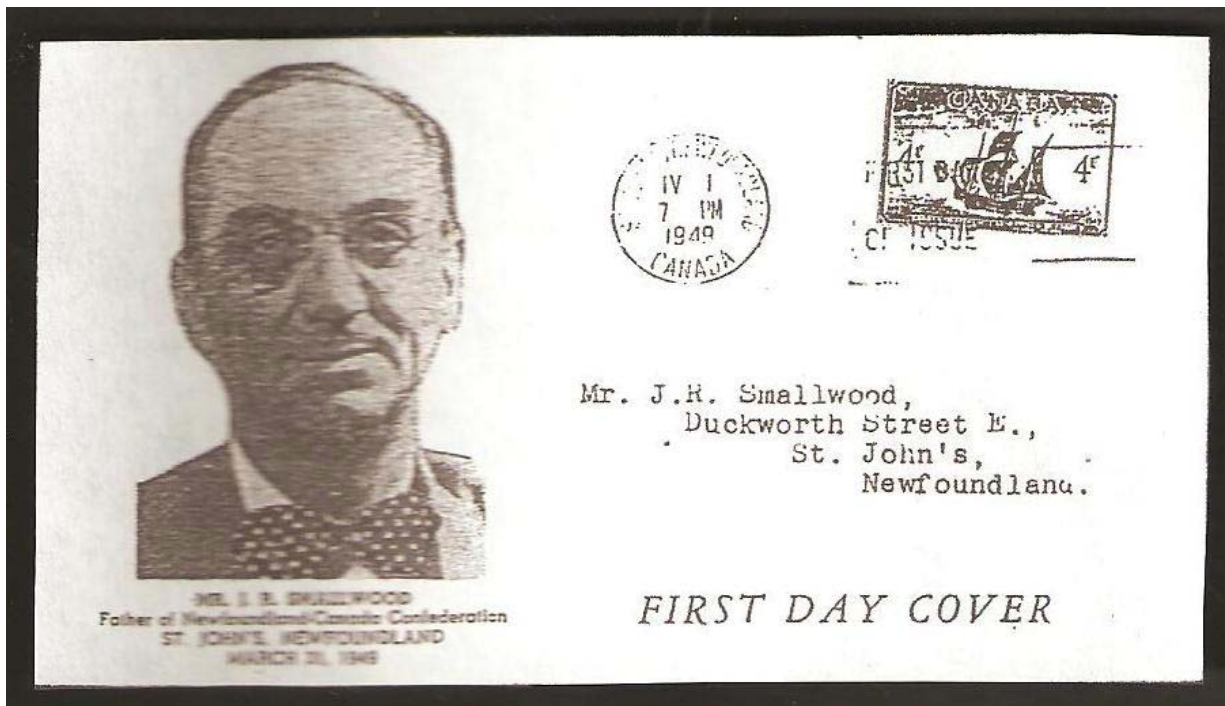


FDC No.: 282.507

Cachet By: Unknown

Description: This black cachet features a likeness of Joey Smallwood and the following text: "MR. J. R. SMALLWOOD/ Father of Newfoundland-Canada Confederation/ ST. JOHN'S, NEWFOUNDLAND/ MARCH 31, 1949."

Photo: This is a second-generation scan from a photocopy by Perkins.



FDC No.: 282.651

Cachet By: Gladys Adler

Description: This cachet was hand-painted in watercolours and shows the "Matthew" with a sun behind it. Lettering at the bottom indicates, "1st DAY ISSUE."

Photo:



FDC No.: 282.652

Cachet By: This hand-made cachet was addressed to a Charles J. Bellamy in Flesherton and has a CDS cancellation from that town, so it is likely that he produced it.

Description: This cachet is an interesting concoction with a pasted-on newspaper photograph of the stamp along with a rubber-stamped “WELCOME/ NEWFOUNDLAND/ CANADA,” a date-stamped “APR 1 1949”, and a typed “FIRST DAY ISSUE.”

Photo:

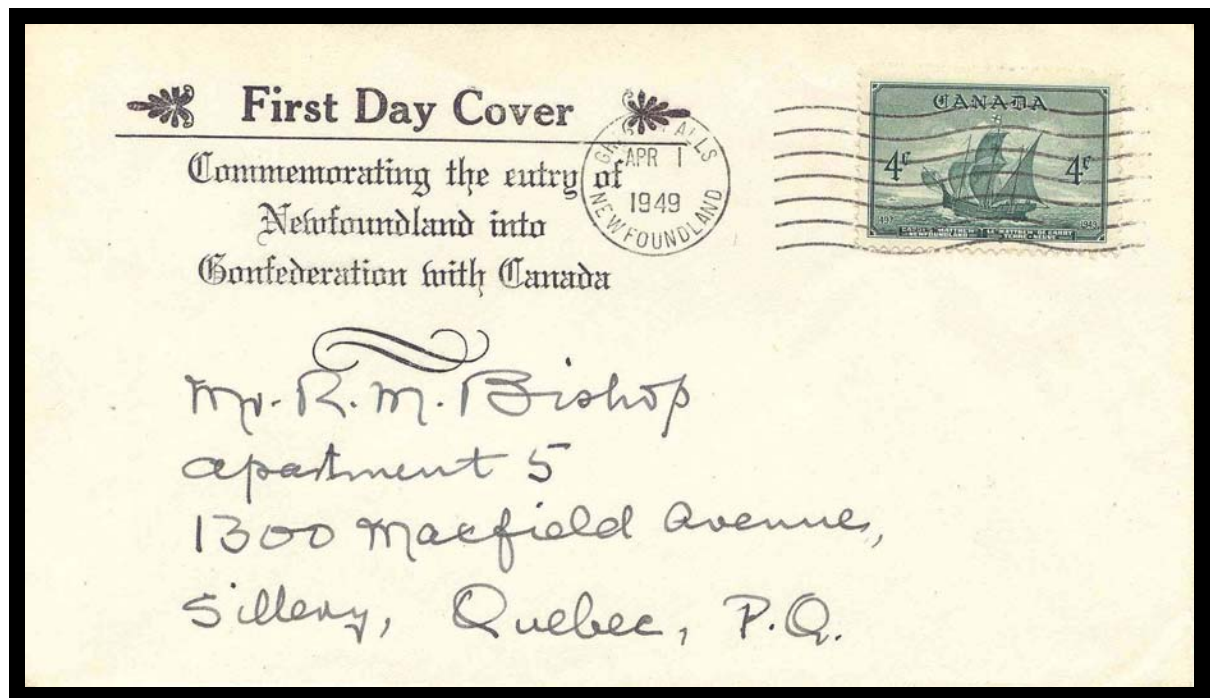


FDC No.: 282.801

Cachet By: Unknown

Description: This cachet has the designation "First Day Cover" above a ruled line with text below the line in italics reading, "Commemorating the entry of/ Newfoundland into/ Confederation with Canada."

Photo:



FDC No.: 282.802

Cachet By: Unknown

Description: This cachet has a pair of clasped hands in blue, with six lines of text in red as follows: "WELCOMING/ NEWFOUNDLAND/ To The [in script]/ DOMINION of CANADA/ 1st April, 1949 [in script]/ FIRST DAY OF ISSUE."

Photo:

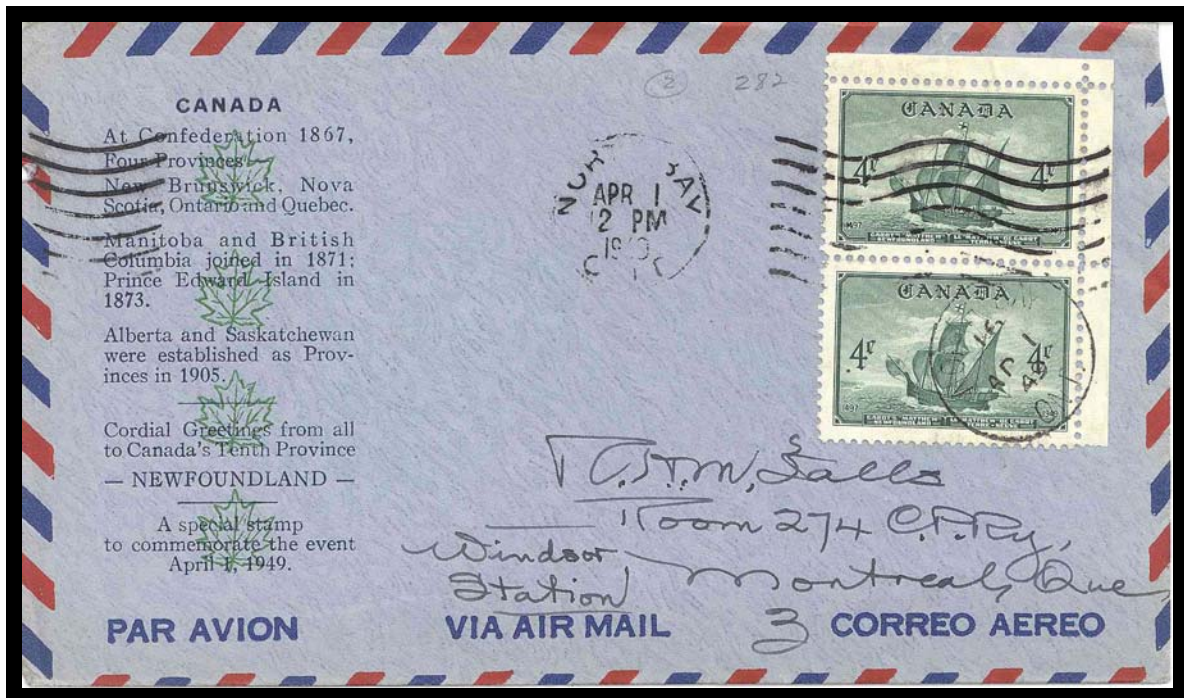


FDC No.: 282.803.01

Cachet By: Unknown

Description: Baron assigned Type 11 to this cachet and described it as follows:
“Lines of black printing superimposed on four green maple leaves. Cachet is printed on a blue air mail envelope. Printing reads, “CANADA,” followed by seventeen lines of printing describing the formation of the Canadian confederation.” The final three lines read, “A special stamp/ to commemorate the event/ April 1, 1949.”

Photo:

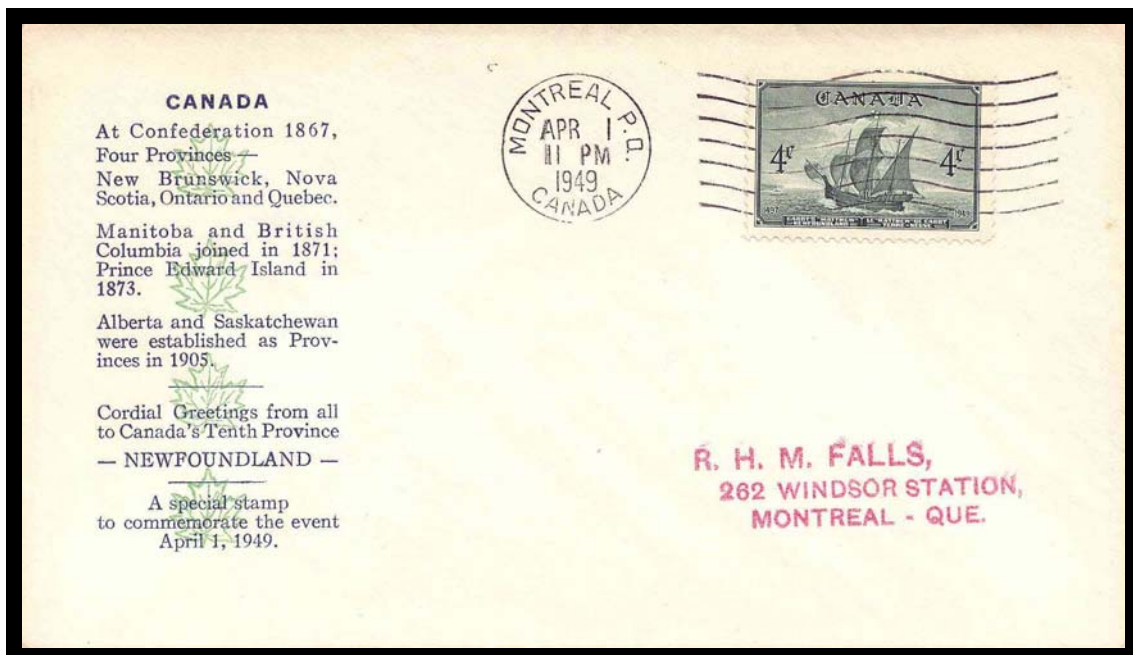


FDC No.: 282.803.02

Cachet By: Unknown

Description: This cachet has the same design as the previous one but it is printed on a white envelope instead of an airmail envelope.

Photo:

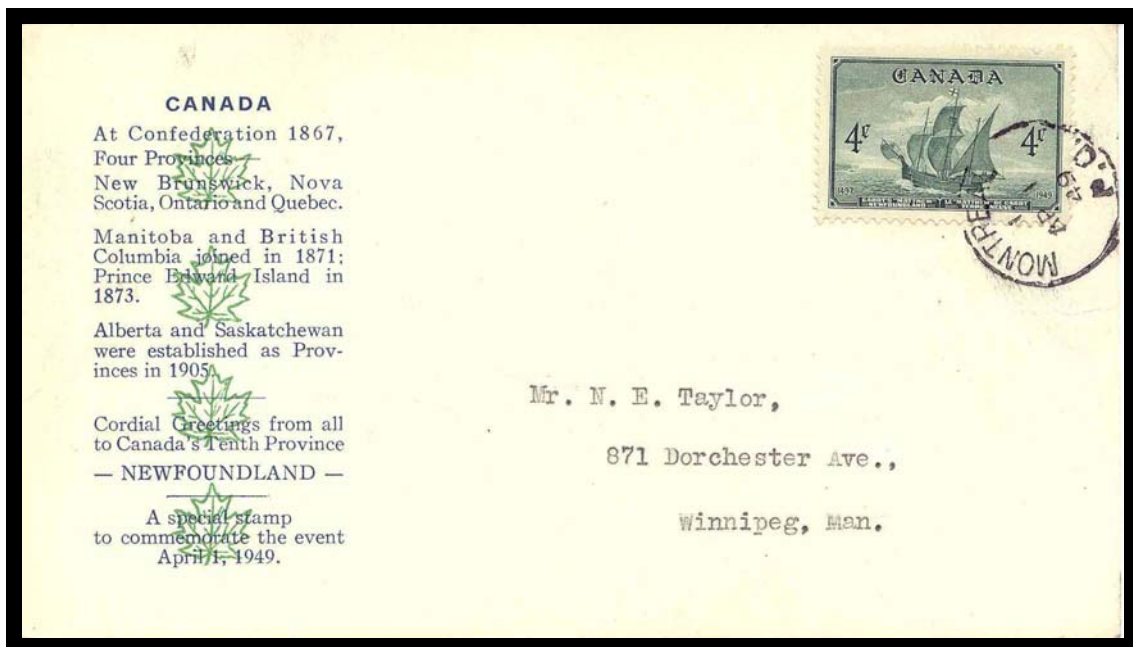


FDC No.: 282.802.03

Cachet By: Unknown

Description: A further version of the previous cachets was printed on a postal card.

Photo:



FDC No.: 282.804

Cachet By: Henry Meisel

Description: This dark blue cachet features a square inside a circle, with the square containing the text, "COMMEMORATING/ CONFEDERATION/ NEWFOUNDLAND/ BECOMES 10 PROVINCE/ CANADA/ 1 APRIL 1949/ ST. JOHN'S/ NFLD., CANADA." Around the circle from the top moving clockwise are the words, "FIRST DAY/ PROVINCE/ 1 APRIL 1949/ CANADA." The dates 14 97 and 19 49 are contained where the four corners of the square overlap the circle. This same design was used for a similar cachet in red marking the last day of Newfoundland as a Crown Colony.

Photo:

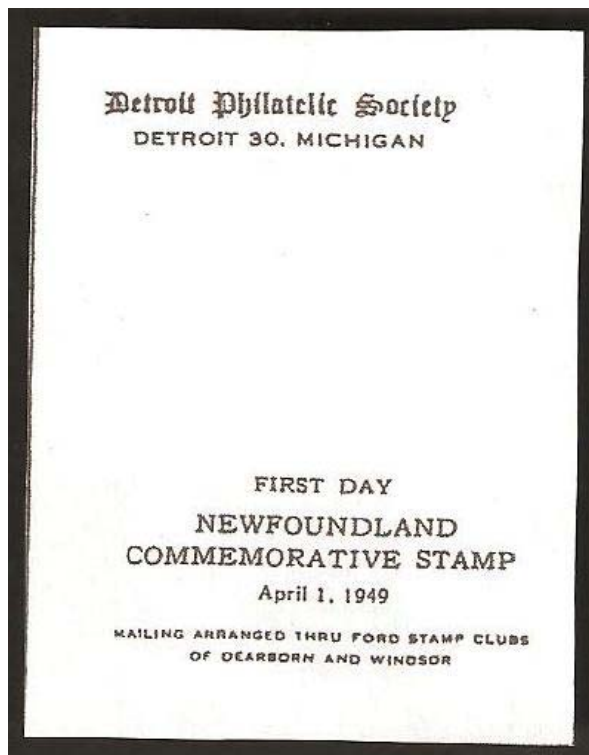


FDC No.: 282.805

Cachet By: Detroit Philatelic Society

Description: This black cachet, Baron's Type 21, has text only beginning with the Society's address at the top. At the bottom of the cachet the text reads, "FIRST DAY/ NEWFOUNDLAND/ COMMEMORATIVE STAMP/ April 1, 1949/ MAILING ARRANGED THRU FORD STAMP CLUB/ OF DEARBORN AND WINDSOR."

Photo: This is a second-generation scan from a photocopy by Perkins.

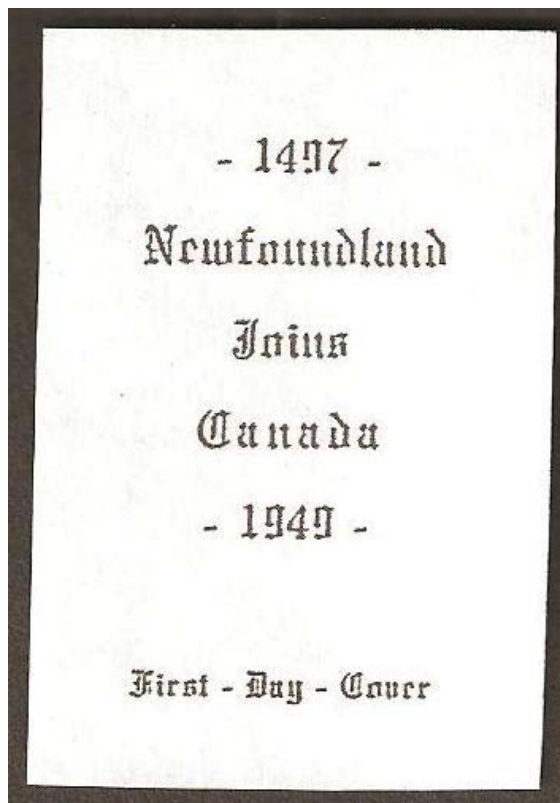


FDC No.: 282.806

Cachet By: Unknown

Description: This is a simple, black cachet with text in italics reading, "1497/
Newfoundland/ Joins/ Canada/ 1949/ First Day Cover."

Photo: This is a second-generation scan from a photocopy by Perkins.



FDC No.: 282.807

Cachet By: Pequegnat

Description: This cachet appeared on a #10 envelope and has green lettering as follows: "NEWFOUNDLAND/ JOINS/ CONFEDERATION/ APRIL 1ST, 1949/ FIRST DAY COVER/ FROM C. D. PEQUEGNAT."

Photo: This is a second-generation scan from a photocopy by Perkins.

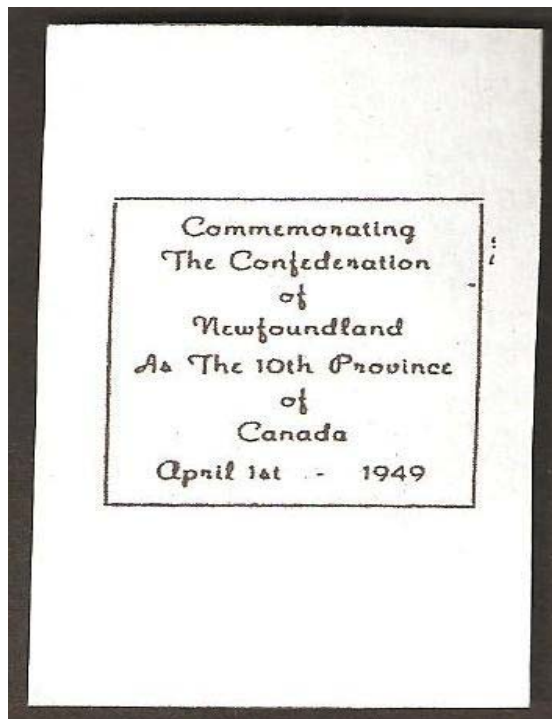


FDC No.: 282.808

Cachet By: Unknown

Description: This cachet has red script within a square box reading,
"Commemorating/ The Confederation/ of/ Newfoundland/ As The 10th Province/ of/
Canada/ April 1st-1949."

Photo: This is a second-generation scan from a photocopy by Perkins.

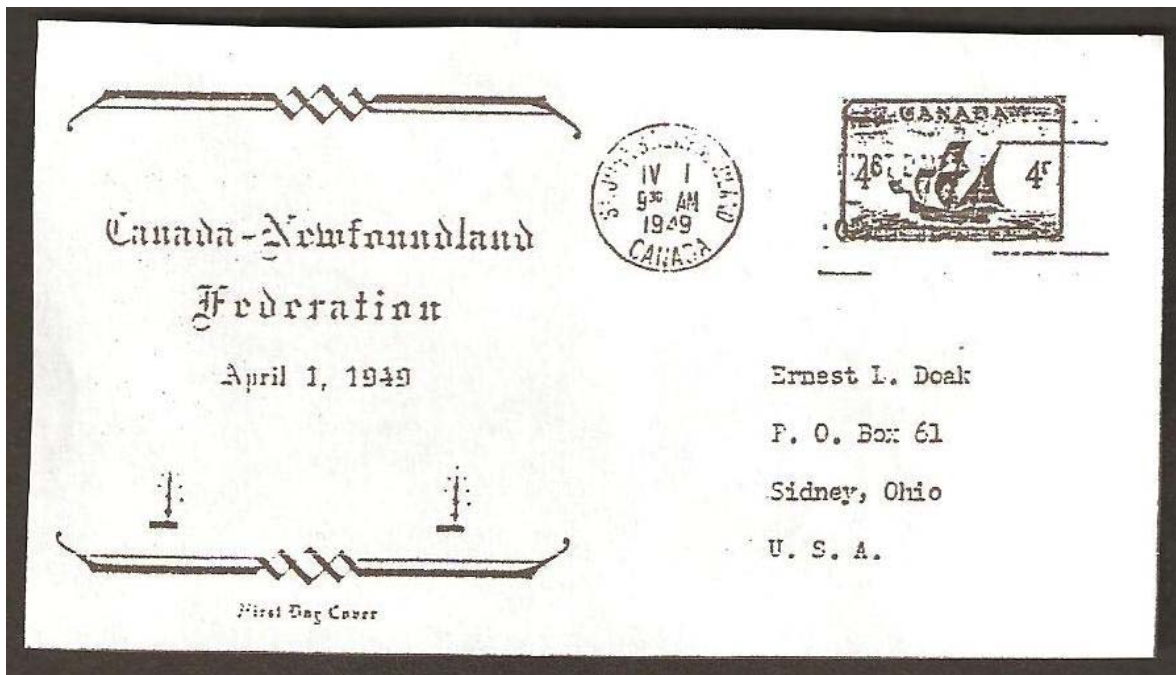


FDC No.: 282.809

Cachet By: Doak

Description: This cachet in green has a simple design and few words: "Canada-Newfoundland/ Federation/ April 1, 1949/ First Day Cover," all in italics.

Photo: This is a second-generation scan from a photocopy by Perkins.

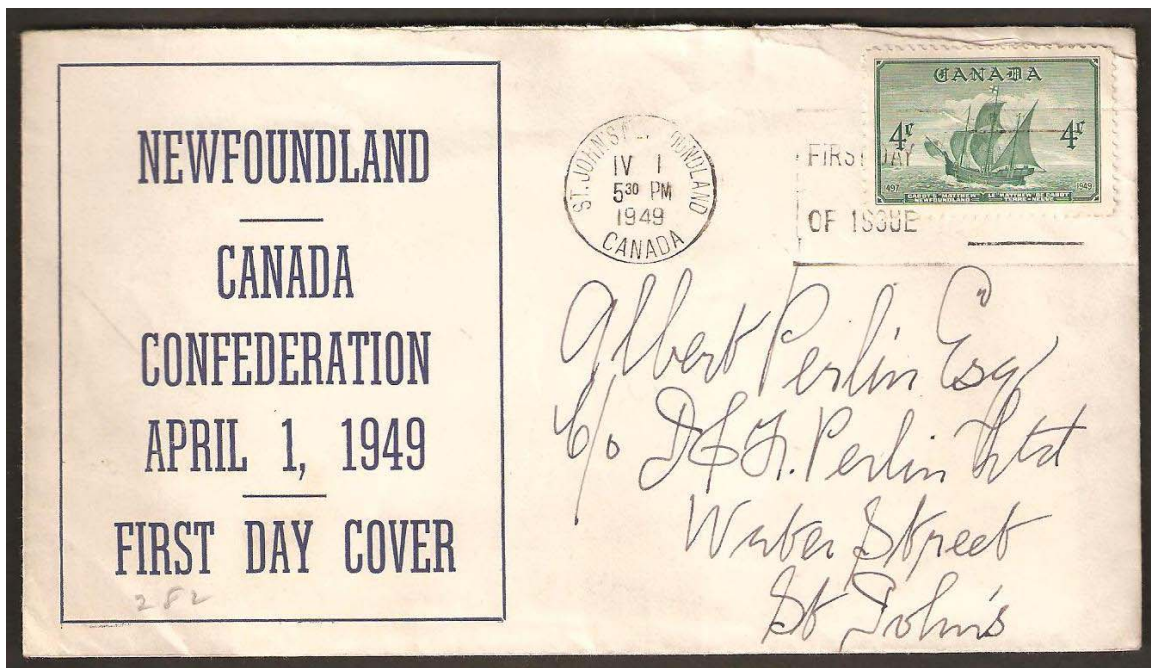


FDC No.: 282.810

Cachet By: Unknown

Description: This text-only cachet has bold lettering of the text,
“NEWFOUNDLAND/ CANADA/ CONFEDERATION/ APRIL 1, 1949/ FIRST DAY
COVER.”

Photo:

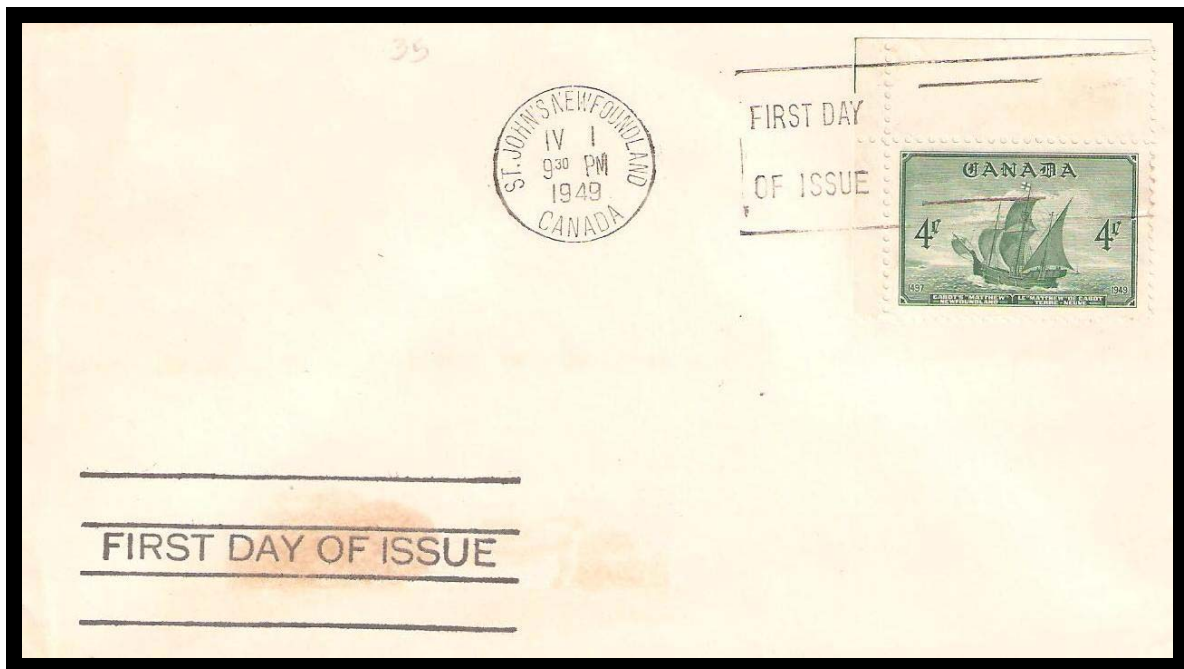


FDC No.: 282.811

Cachet By: Unknown

Description: This simple design has four parallel lines with "FIRST DAY OF
ISSUE" in the middle of them.

Photo:



FDC No.: 282.812

Cachet By: Unknown

Description: This “mourning cover” in black suggests that not all Newfoundlanders were thrilled with becoming a Canadian province. The cover reads, “IN MEMORIAM/ Newfoundland/ Responsible Government/ May 7, 1855 March 31, 1949/ First Day Cover Newfoundland, Canada Confederation.”

Photo:

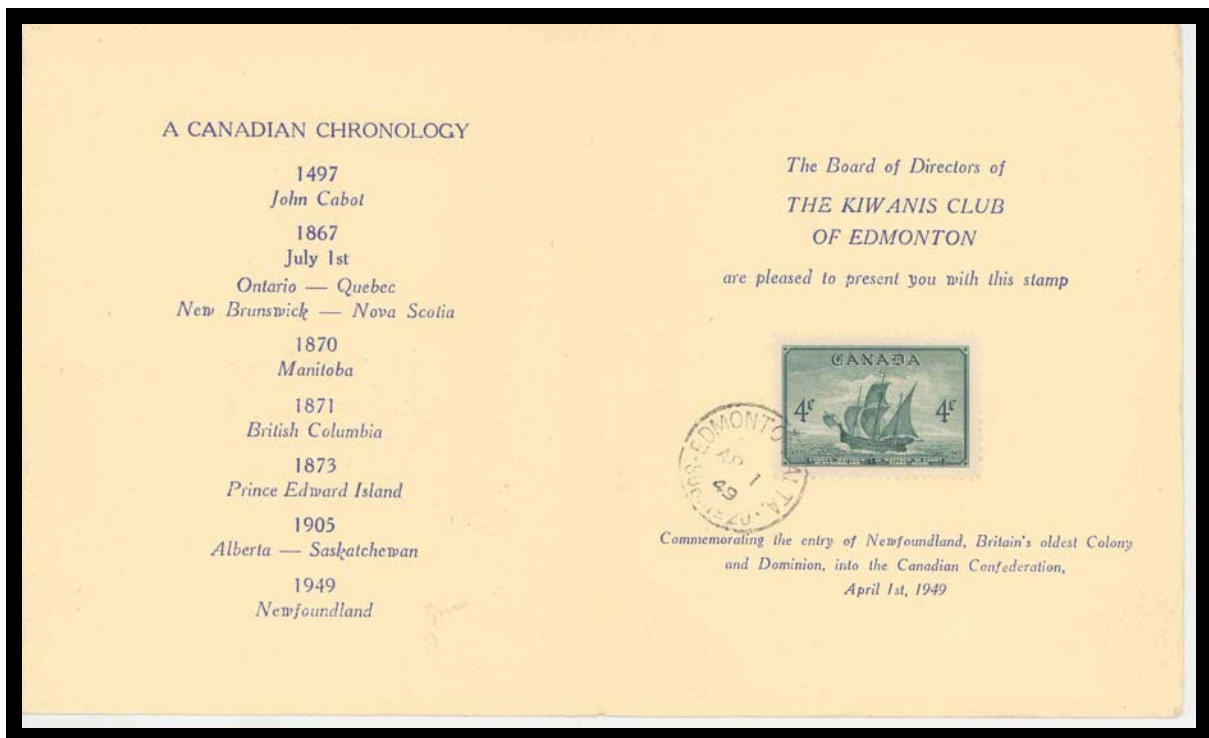


FDC No.: 282.813

Cachet By: Unknown

Description: This souvenir card was issued by the Kiwanis Club of Edmonton. There is a brief "Canadian Chronology" on the left side. Text above the stamp reads, "The Board of Directors of/ THE KIWANIS CLUB/ OF EDMONTON/ are pleased to present you with this stamp." Additional text below the stamp says, "Commemorating the entry of Newfoundland, Britain's oldest Colony/ and Dominion into the Canadian Confederation,/ April 1st, 1949."

Photo:

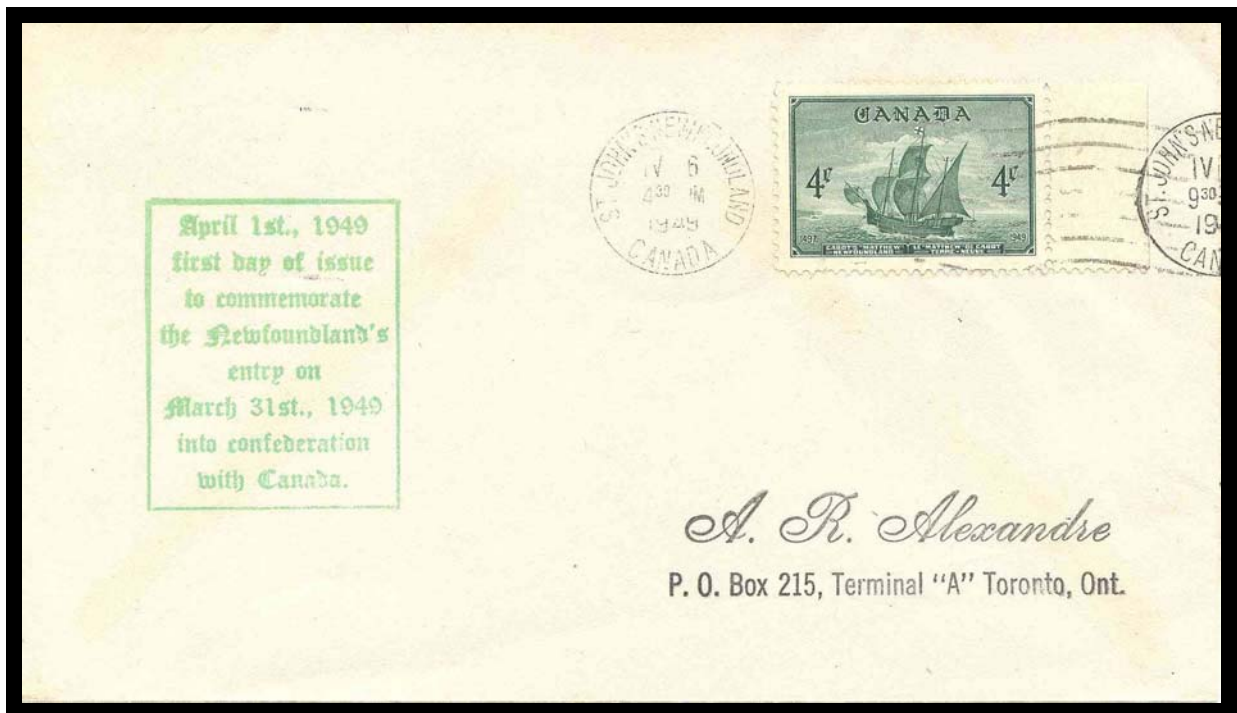


FDC No.: 282.814

Cachet By: A. R. Alexandre

Description: This green cachet has text which reads rather awkwardly as follows: "April 1st, 1949/ first day of issue/ to commemorate/ the Newfoundland's/ entry on/ March 31st, 1949/ into confederation/ with Canada."

Photo:



FDC No.: 282.851

Cachet By: Unknown

Description: This is a rubber-stamp cachet "FIRST DAY COVER" in red ink.

Photo:

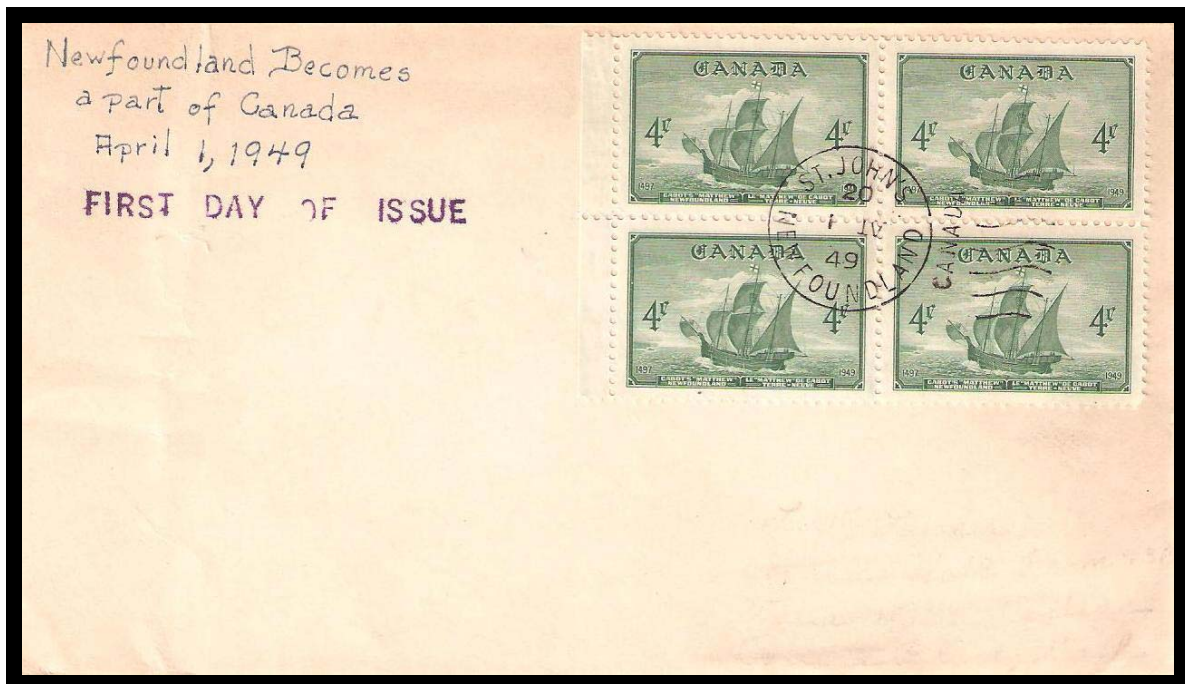


FDC No.: 282.852

Cachet By: Unknown

Description: This cover has a purple rubber-stamped cachet "FIRST DAY OF ISSUE" as well as a hand-printed message, "Newfoundland Becomes/ a part of Canada/ April 1, 1949."

Photo:



FDC No.: 282.853

Cachet By: Unknown

Description: This business envelope was used as a FDC mailed by radio station CKNW in New Westminster, B.C. It has a rubber-stamped notation, "FIRST DAY OF ISSUE/ COMMEMORATING/ NEWFOUNDLAND ENTRY." The cover was apparently produced in sufficient quantity to warrant the preparation of a specific hand-stamp to mark the occasion.

Photo:



FDC No.: 282.901

Cachet By: Talbot

Description: This cachet features an attractive, multi-coloured Canadian Coat of Arms. Italicized text below the Coat of Arms reads, "First Day Cover" while on the bottom right it reads, "Canada's New Stamp Issue."

Photo:



FDC No.: 282.902

Cachet By: Unknown

Description: This general purpose cachet in red features Canada's Coat of Arms with text below it indicating "FIRST DAY COVER."

Photo:



FDC No.: 282.903

Cachet By: Frank Herget

Description: A blue maple leaf is shown on this general purpose cachet.
"CANADIAN NEW ISSUE" is lettered on the leaf.

Photo:



FDC No.: 282.904

Cachet By: Unknown

Description: The dominant feature of this general purpose cachet is the blue lettering "FIRST DAY COVER." There are small Union Jacks above the lettering to the left and right and two very small maple leaves below the text at left and right.

Photo:



FDC No.: 282.905

Cachet By: Unknown

Description: This dark blue cachet features Nova Scotia's Coat of Arms, with text above it reading, "DOMINION OF CANADA/ Cover No. 5—Set of 10" and below it "PROVINCE OF NOVA SCOTIA."

Photo: This is a second-generation scan from an Internet image.



FDC No.: 282.906

Cachet By: Van Dahl

Description: This cachet was used for numerous issues over an extended period and features a brown globe showing North and South America with green lettering, "First Day Cover."

Photo:

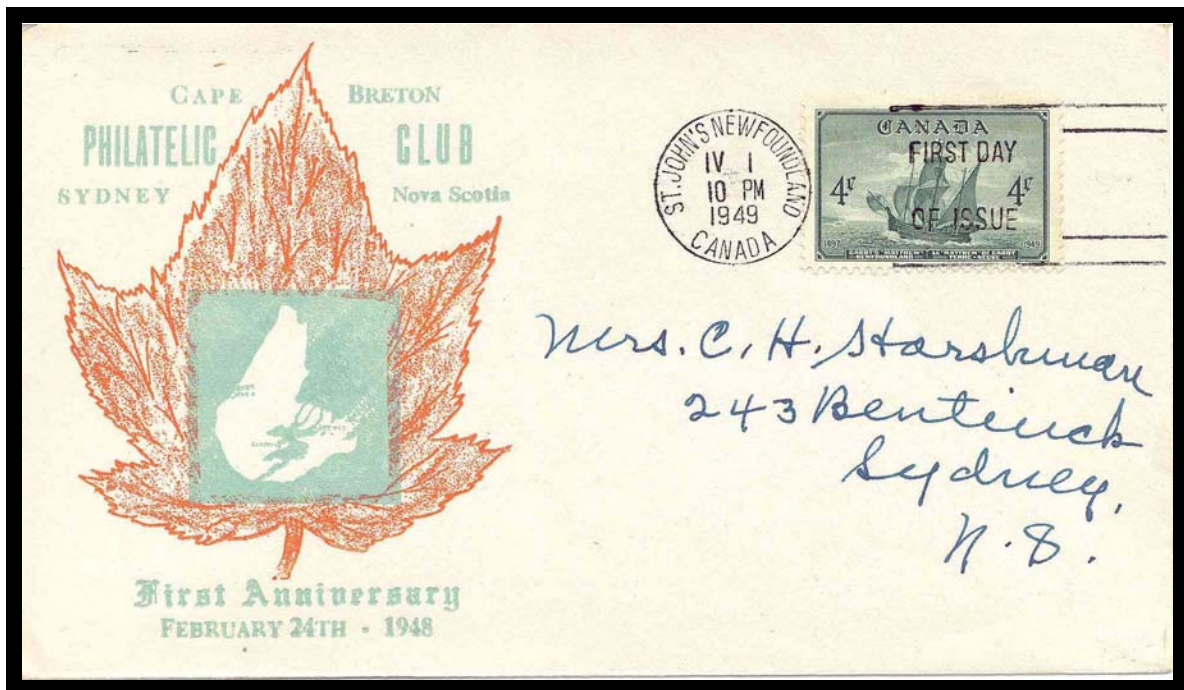


FDC No.: 282.907

Cachet By: Cape Breton Philatelic Club

Description: This general purpose cachet produced by the Cape Breton Philatelic Club features the name and location (Sydney, Nova Scotia) of the Club. Below the graphic design is the wording, "First Anniversary/ February 24th -1948."

Photo:



FDC No.: 282.908

Cachet By: Fidelity

Description: This general purpose Fidelity cachet shows a plane flying through the clouds above a letter carrier. The only text is "FIRST DAY COVER."

Photo:



FDC No.: 282.995.01

Cachet By: NA

Description: This uncacheted FDC has a business corner card of Rev. D. H. Woodhouse of Arnprior, Ontario. The cover has Arnprior CDS cancellations along with a rectangular registration mark on the front and an oval one on the back.

Photo:

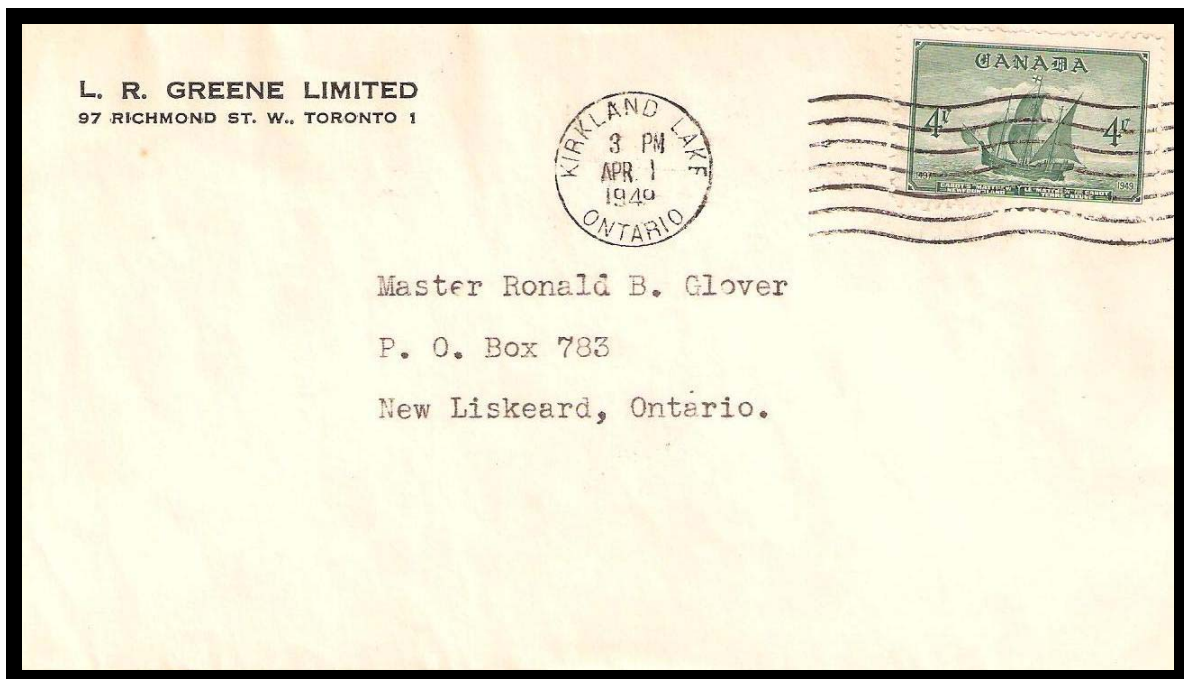


FDC No.: 282.996.01

Cachet By: NA

Description: This business corner card has no indication other than the postmark that it is a FDC. The machine cancel is from Kirkland Lake, Ontario, a relatively uncommon first day postmark.

Photo:



FDC No.: 282.997.01

Cachet By: NA

Description: This registered, philatelic cover has 27 cents of postage and is franked with the set (Scott Nos. 141-145) marking the 60th anniversary of Confederation in 1927. The first day postmarks include St. John's duplexes and a St. John's Distributing Office registration mark. There is a typed note, "COMPLETION OF CONFEDERATION."

Photo:



FDC No.: 282.997.02

Cachet By: NA

Description: This FDC from Twillingate, NL has 22 cents postage comprised of a pair of #282 along with eight War Issue stamps. Although it is a local letter, it has Special Delivery and Air Mail markings. There is a typed notation, "First Day Cover/ Nfld Joins Canada."

Photo:



FDC No.: 282.998.01

Cachet By: NA

Description: This cover, postmarked with an Ottawa machine cancellation, has a "FIRST DAY COVER" legend penned in the bottom left corner.

Photo:



FDC No.: 282.999.01

Cachet By: NA

Description: This cover was originally mailed on April 1, 1949 with the postmark being the only indication that it was a FDC. Subsequently, a label to mark the 25th anniversary of Newfoundland joining Confederation in 1974 was pasted on the upper left corner.

Photo:

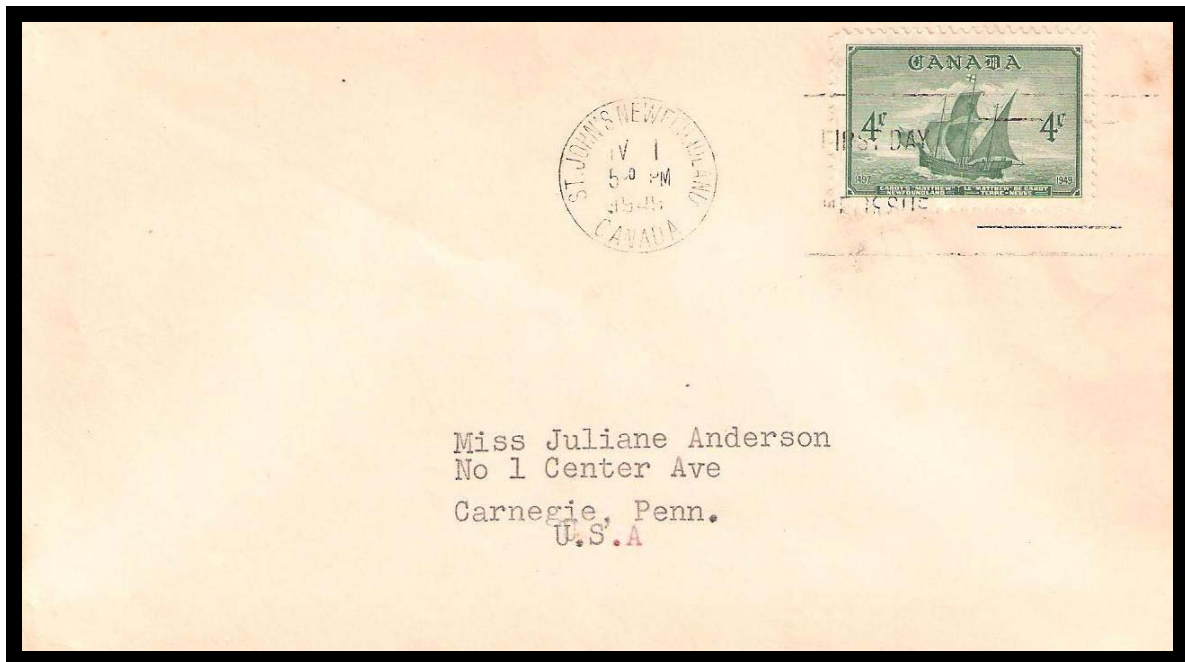


FDC No.: 282.999.02

Cachet By: NA

Description: This cover is identifiable as a FDC only by the day-of-issue postmark.

Photo:



FDC No.: 282.999.03

Cachet By: N.A.

Description: Although this cover has no markings apart from the cancellation identifying it as a FDC, it has the rubber-stamped address of A. R. Alexandre, a frequent producer of FDC's of the day.

Photo:

