

A STUDY OF THE PLATES, PAPERS & GUMS

of the

1937 1¢, 2¢ & 3¢ MUFTI ISSUES OF CANADA



prepared by
Stephen F. Prest

November 2008

A Study of the Plates, Papers & Gums
of the
1937 1¢, 2¢ & 3¢ Mufti Issue of Canada

Table of Contents

| | Page |
|------------------------------|------|
| Summary | 3 |
| Plate Numbers | 3 |
| Control Numbers | 4 |
| Production Methodology | 4 |
| Paper Types | 7 |
| Gum Types | 8 |
| | |
| Appendix 1 | 9 |

BNAPS George VI Study Group

Excerpts of this Study Paper appeared in Issue 13 (Jan - Dec 2008) of the BNAPS George VI Study Group newsletter, "The King George VI Post & Mail". The aim of this paper and the BNAPS George VI Study group is to promote research into the postage stamps and postal history of the stamps produced and used by Canada and Newfoundland during the reign of King George VI between 1937 and 1952. The author acknowledges the comments and support of members of the Study Group and their encouragement to publish this Study Paper.

A Study of the Plates, Papers & Gums
of the
1937 1¢, 2¢ & 3¢ Mufti Issue of Canada

Summary

This paper reviews a series of studies of the 1937 1¢, 2¢ & 3¢ “Mufti” stamps of Canada which dealt with visually observable differences of the plates, papers and gums of these three issues. Some 900 plate blocks spanning forty-eight printing plates of the three issues combined form the basis of this study. An approximate time line for the production of each of the plates of the 1¢, 2¢ & 3¢ Mufti printing plates between 1937 and 1942 is put forward based on analysis of Post Office Control Number information.

Two Selvedge types, Narrow and Normal were identified. The results of this study suggest that the Narrow Selvedge variety sheets of these Mufti stamps were predominantly produced in the 1937-38 period. The Narrow Selvedge variety occurs more frequently in the case of the 1¢ Mufti stamp where 25% of the plate blocks examined were found with Narrow Selvedge. About 9% of the 2¢ Mufti plate blocks fell into the Narrow Selvedge category while less than 1% of the 3¢ Mufti plate blocks were classified as a Narrow Selvedge type. Two Very Narrow Selvedge examples have been identified in this study, both being from Plate No. 2 of the 1¢ Mufti.

The two experimental plates featuring six panes of 100 stamps for each of the 2¢ (Pl. Nos. 9 & 10) and the 3¢ (Pl. Nos. 12 & 13) values respectively appear to have been produced in late 1939.

Four types of paper; Ribbed, Wove (diagonally), Hatched and Regular; have been identified by visual observation of differences in physical characteristics of paper texture. Similarly, three types of gum have been visually identified, namely Streaky, Mottled and Smooth (Clear).

Ribbed, Hatched and Regular Papers appear to have been used in the initial production of these stamps but their general use appears to have fallen away by 1941. Wove Paper appears to have been introduced in 1938-39 and its relative use in production grew in importance from 1940 onwards.

Mottled and Streaky Gums tend to be associated with Ribbed, Hatched and Regular Paper examples of plate blocks produced in the 1937-39 period. Smooth (Clear) Gum tends to be associated with Wove Paper examples.

Certain limitations and areas where further research may be warranted were identified in the study of the 1¢ Mufti plate blocks and these apply equally to the 2¢ and 3¢ Mufti stamps included in this current study. Readers are encouraged to consult the Introduction section of the earlier study which appeared in Issue 7 of the Post & Mail ⁽¹⁾ for relevant details of these limitations. This article that appeared in Issue 7 also covers in more detail than is treated here, descriptions and distinguishing characteristics of the papers and gums types referred to in this current paper.

Lastly, further detailed information relating to the Mufti stamps issued between 1937 and 1942 can be found by following the links on the Research page of the KGVI Study Group Website.

Plate Numbers

Forty-eight different plates in total were used for the production of the 1¢, 2¢ & 3¢ Mufti stamps over the 1937 - 42 period.

The author is not aware of records indicating the periods of use or the number of sheets produced from each of the plates used to produce these Mufti stamps. It would seem from first order analysis of the data described in this paper, the plates came into use sequentially over time in ascending plate number order. This aspect needs further study as time and access to Post Office Archives permit but known records related to plate block Control do provide some guidance as is shown below.

Control Numbers

Each lower left plate block printed by CBNC during the Mufti period contains a “Control Number” printed in the left hand margin. T.B Higginson’s⁽²⁾ article on this subject provides a detailed listing of Control Numbers found on George VI Stamps of Canada. An important observation in his article concerns the Post Office’s confirmation that control numbers between 500 and 1400 were used for postage work. Some of the numbers in this range were used for printing plates and appear on the lower left selvedge of Mufti and other sheet stamps, while others were assigned to other aspects of postage work.

Tabulating Higginson’s data to take into account the Control Numbers found on the 1937 Coronation, the 1938 Pictorials, the 1939 Royal Visit and the first War Issue stamps, and, assuming that the Post Office Control Numbers were used sequentially over time, one can estimate the likely time period each of the Mufti 1¢, 2¢ & 3¢ plates were produced as follows.

| <u>Time Period</u> | <u>1¢ Mufti Plate Nos.</u> | <u>2¢ Mufti Plate Nos.</u> | <u>3¢ Mufti Plate Nos.</u> |
|--------------------|----------------------------|----------------------------|----------------------------|
| 1937 | 1, 2, 3, & 4 | 1, 2, 3, 4 & 5 | 1, 2, 3 & 4 |
| 1938 | 5 | - | 5, 6, 7, 8, 9, 10 & 11 |
| 1939 | 6, 7 & 8 | 6, 7, 8, 9 & 10 | 12, 13, 14 & 15 |
| 1940 | 9 | 11, 12 & 13 | 16 & 17 |
| 1941 | 10 & 11 | 14 | 18 & 19 |
| 1942 | - | - | 20, 21, 22 & 23 |

While printings from these plates could take place at any interval following the time periods noted above, this pattern of dates provides a useful framework against which other observed changes in the papers and gums of the 1¢ to 3¢ Mufti stamps can be considered.

Production Methodology – Normal and Narrow Selvedges

The production method for the 1937 low value Mufti stamps generally involved the printing of a sheet comprising 400 images assembled in four panes of 100 stamps of 10 rows and columns each separated by unprinted gutters. The sheets of 400 were slit through the gutters to create the individual panes of 100 stamps. The printer’s inscription and Plate Number were printed along the top and bottom selvedge generally above (or below) the first two columns of stamps at the four furthest corners of the sheet.

Panes were then subject to a perforation process. All Mufti stamps were line perforated 12 gauge with the perforations extending through the sheet selvedge. No perforation varieties having been reported or identified during the course of this study.

Two noticeable variations of width exist for the marginal selvedge of the sheets of these stamps defined for the purposes of this study as: Normal and Narrow. Typically the Top, Bottom and Side selvedge margins are 5 mm wider for the Normal versus the Narrow plate blocks. The range of selvedge margin widths in mm is shown below.

| | <u>Selvedge Width in mm</u> | |
|-----------------|-----------------------------|--------------|
| | <u>Top/Bottom</u> | <u>Sides</u> |
| Normal Selvedge | 14 to 18 | 12 to 13 |
| Narrow Selvedge | 9 to 10 | 7 to 8 |

Two examples of a Very Narrow Selvedge type, measuring only 3.5 mm in width have been identified among the 1¢ Mufti plate blocks examined in this study. No Very Narrow examples have been observed among the 2¢ and 3¢ Mufti plate blocks examined in this study.

Very Narrow Selvedge



Narrow Selvedge



Normal Selvedge



About 9% of plate blocks surveyed can be classified as the Narrow Selvedge type. This variety occurs more frequently in the case of the 1¢ Mufti stamp where 25% of the plate blocks examined were found to be of the Narrow Selvedge type. About 9% of the 2¢ Mufti plate blocks fell into the Narrow Selvedge category while less than 1% of the 3¢ Mufti plate blocks can be classified as a Narrow Selvedge type.

All most all the Narrow Selvedge plate blocks were produced in 1937 as illustrated in Figure 1 below.

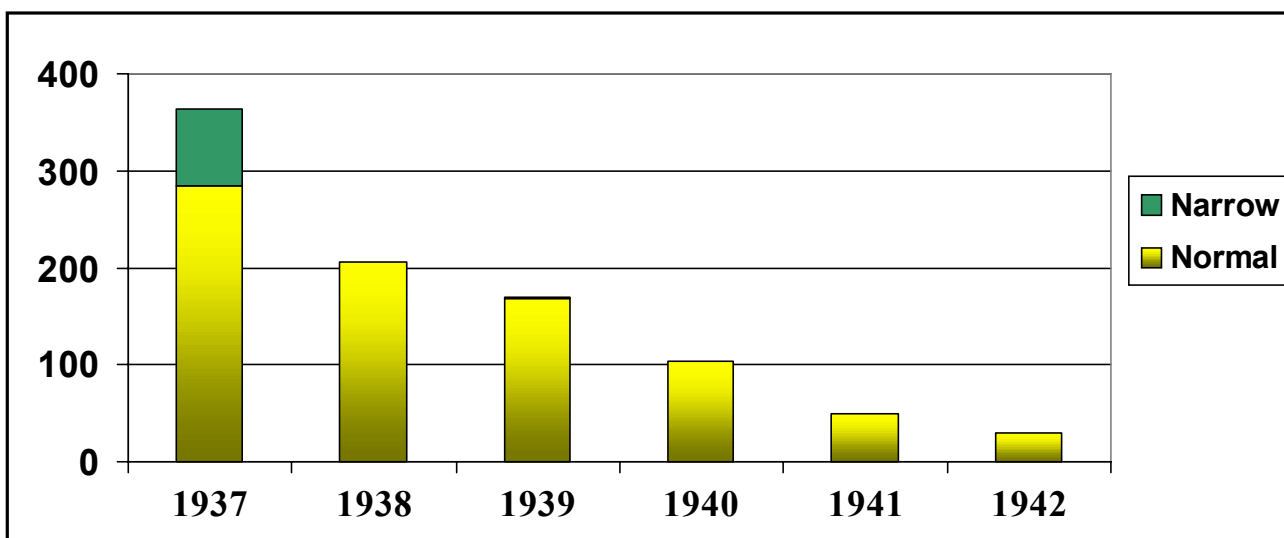


Figure 1 - 1¢, 2¢ & 3¢ Mufti Plate Block Selvedge Distribution

Production Methodology - The Experimental Plates

In the case of the 2¢ & 3¢ stamps, two experimental plates (Plates 9 & 10) and (Plates 12 & 13) respectively were prepared comprising 600 images assembled in six panes of 100 stamps laid out in a configuration of two rows by three columns. The inscription block of the two centre plates are placed above and below stamp columns 4 through 7 of the top and bottom centre panes as illustrated below.



2¢ Top Centre Plate 9 & Bottom Centre Plate 10 Blocks



3¢ Top Centre Plate 12 & Bottom Centre Plate 13 Blocks



Paper Types

It has long been recognized that the Mufti stamps were apparently printed on a number of different papers⁽³⁾. Four main paper types, Wove, Ribbed, Hatched and Regular were identified and described in the earlier 1¢ Mufti study⁽¹⁾. Study of the 2¢ & 3¢ Mufti plate blocks revealed that their papers could be classified into these previously defined categories as illustrated below.

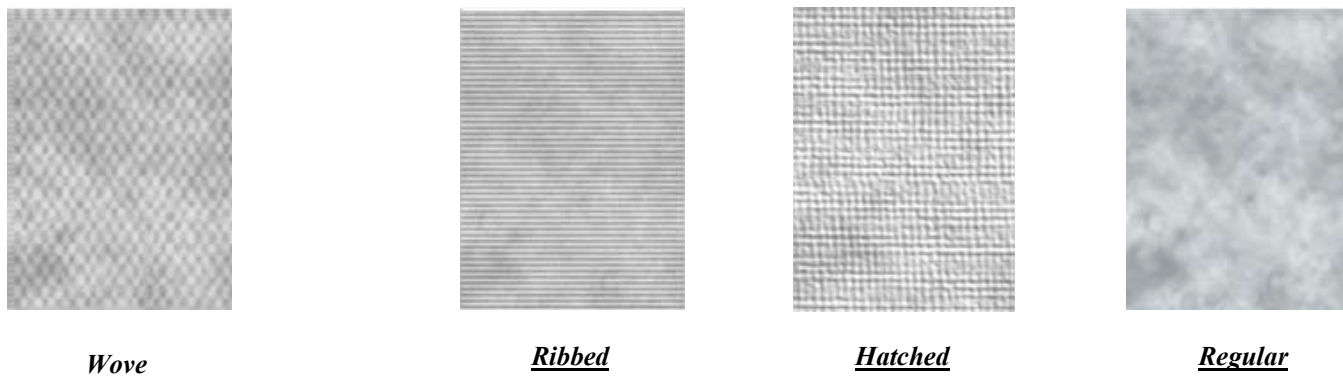


Figure 2 depicts the percentage distribution in each of the years 1937 to 1942 for each of the four defined paper types identified among the Mufti plate blocks examined in this study.

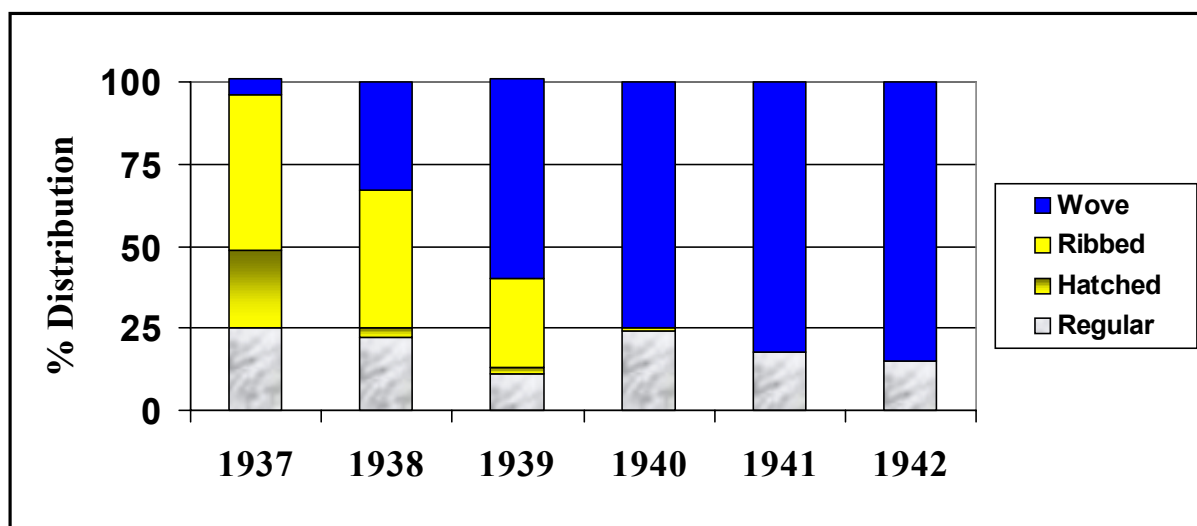


Figure 2 - 1¢, 2¢ & 3¢ Mufti Plate Block Paper Types

A number of trends are evident. First, Ribbed and Hatched Paper examples predominate among plate blocks produced in 1937, the first part of the Mufti era. Ribbed Paper examples continue to represent an important proportion among plate blocks produced in 1938-39 while Hatched Paper examples are reduced to about 3% in those years. No examples of Ribbed or Hatched Papers were identified among the plate blocks produced in the 1940-42 period.

By comparison, only limited quantities of Wove Paper would seem to have been introduced sometime in 1937 given its general absence from the Plate Nos. 1 & 2 examples examined in this survey. By 1939, Wove Paper became the predominate paper in use for all three Mufti low value stamps by 1939 and this trend continued through to the end of the Mufti period.

Regular Paper examples are observed throughout the Mufti period. In the first paper in this series on the 1¢ Mufti⁽¹⁾ it was suggested that Hatched Paper (and possibly also Regular Paper) is a thicker variety of Ribbed Paper where the extra thickness of the paper diminishes the horizontal ribbing effect one sees in Ribbed Paper. As these studies have progressed to include the 2¢ and 3¢ issues, and it would appear that this observation could be extended to include the case of Wove Paper as well, where thicker examples of this paper type are classified as Regular Paper.

Gum Types

Three main gum types were identified as appearing on the back of 1¢ Mufti stamps ⁽¹⁾ and plate block examples evaluated in the further study of 2¢ & 3¢ Mufti plate blocks can be classified in the same way; namely Streaky, Mottled and Smooth (shiny-clear) Gum. The colouration of the gummed surface of these three gum types can range from dark amber-brown to light honey for the Streaky and Mottled Gum types while the Smooth Gum variety ranges from creamy off-white to light honey. Images of selected examples of these gums are illustrated below.

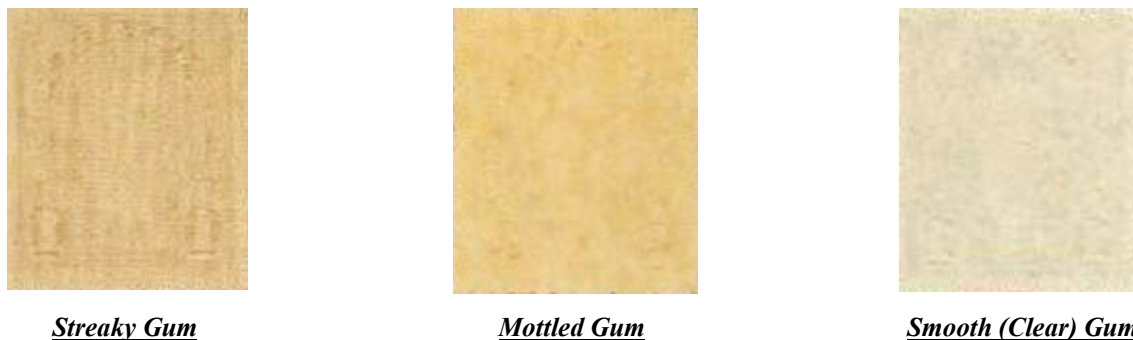


Figure 3 depicts the percentage distribution in each of the years 1937 to 1942 for each of the three gum types identified among the Mufti plate blocks examined in this study.

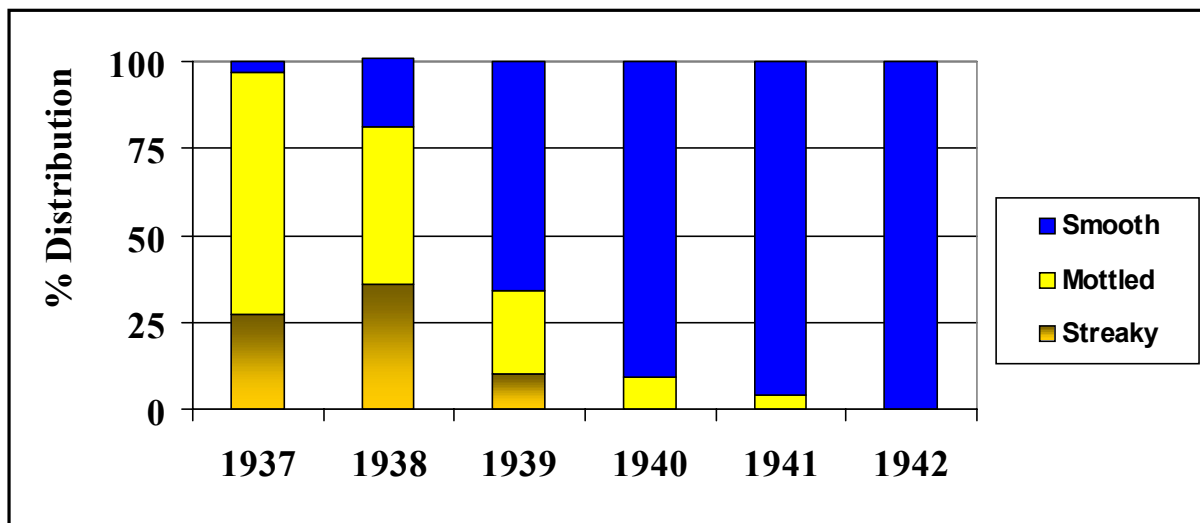


Figure 3 - 1¢, 2¢ & 3¢ Mufti Plate Block Gum Types

As with papers, a number of trends are evident. First, Streaky and Mottled gums predominate among examples produced in 1937 but become relatively less important from 1940 onwards. No examples of Streaky Gum were identified from plates produced in the period 1940-42.

The data depicted on Figures 4 through 6 indicate the relationships between Gum and Paper types. This analysis indicates that the Wove Paper variety is largely associated with the Smooth (Clear) type. Similar trends are less clear for the other three paper types. Regular, Hatched and Ribbed Papers are generally found with Mottled and Streaky Gum. The relative proportions of these three papers appearing with either Mottled or Streaky Gum are roughly the same for stamps from the plate produced in 1937. However, only Ribbed and to a lesser extent, Wove Paper types appear with Streaky Gum in 1938.

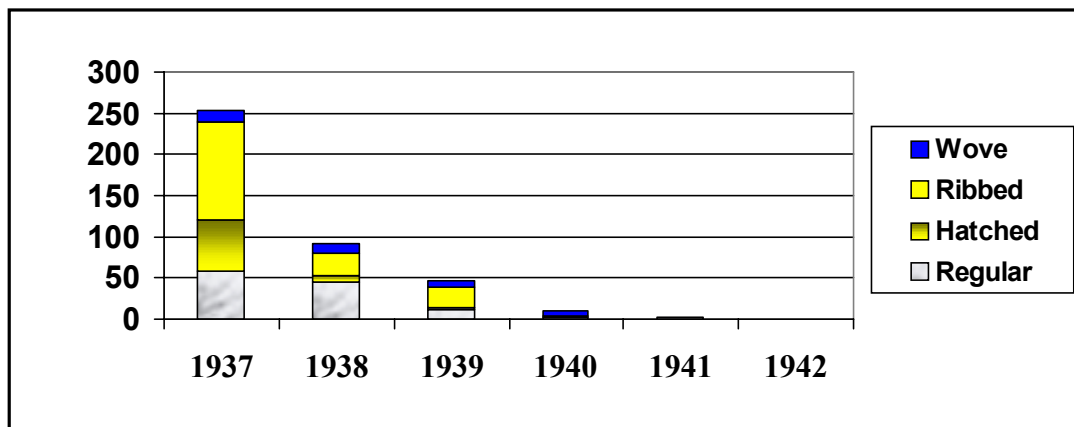


Figure 4 - 1¢, 2¢ & 3¢ Mufti Plate Block - Mottled Gum

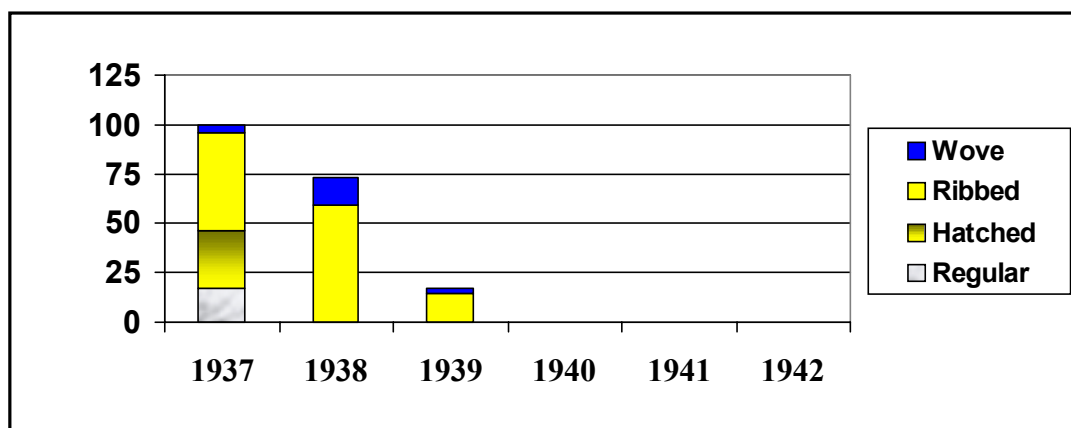


Figure 5 - 1¢, 2¢ & 3¢ Mufti Plate Block - Streaky Gum

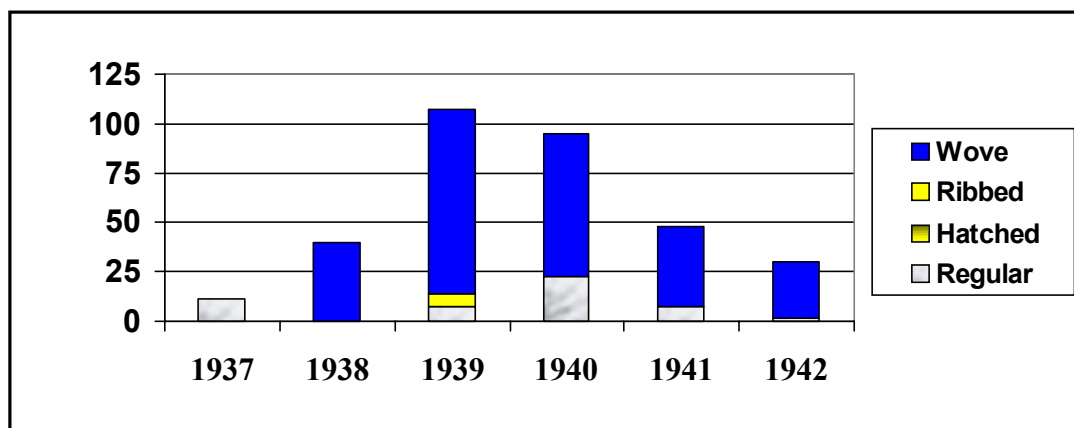


Figure 6 - 1¢, 2¢ & 3¢ Mufti Plate Block - Smooth (Clear) Gum

Bibliography

- (1) “The Plates Papers & Gums of the 1937-38 Stamps of Canada; Part I - The 1¢ Mufti Issue - An Interim Study” by Stephen Prest, **King George VI Post & Mail**, Issue 7, July-Dec 2005, pp 7-13.
- (2) “Control Numbers on George VI Stamps of Canada” by T.B. Higginson, **BNA TOPICS** Vol. 9 (Whole No. 89, March 1952), Pages 66 to 71
- (3) “Specialized Philatelic Catalogue of Canada and British North America” (1954) page 90, Editor L. Seale Holmes.

A Study of the Plates, Papers & Gums
of the
The 1¢, 2¢ & 3¢ Mufti Issue of Canada

Table of Contents

| | Page |
|-----------------------------------------------------|---------|
| Estimated Production Plate Periods | 11 |
| Selvedge Width - Summary Data Grouped by Year | 12 |
| Paper Types - Summary Data Grouped by Year | 13 |
| Gum Type - Summary Data Grouped by Year | 14 |
| Summary Data Bases | 15 - 28 |

1937 1, 2 & 3¢ Mufti Issues

Control Number - Estimated Plate Production Periods

| Stamps | Plate Nos. | Control Numbers | Estimated Period when Plate were Produced |
|------------------|-------------|----------------------------|-------------------------------------------|
| 3¢ Mufti | 1, 2, 3 & 4 | 905 | Winter 1937 |
| 1¢ Mufti | 1, 2, 3 & 4 | 906 | Winter 1937 |
| 2¢ Mufti | 1, 2, 3 & 4 | 907 | Winter 1937 |
| 3¢ Coronation | | 946 | Winter - Spring 1937 |
| 2¢ Mufti | 5 | 964 | Fall 1937 |
| 3¢ Mufti | 5,6 | 1048 | Winter 1938 |
| 3¢ Mufti | 7,8 | 1053 | Winter 1938 |
| 1938 Pictorials | | 1132 to 1137 | Winter - Spring 1938 |
| 3¢ Mufti | 9,10 | 1256 | Late 1938 |
| 1¢ Mufti | 5 | 1263 | Late 1938 |
| 3¢ Mufti | 11, | 1278 | Late 1938 |
| 1¢ Mufti | 6 | 1324 | Fall 1938 - Winter 1939 |
| 1¢ Mufti | 7 & 8 | 1329 | Winter 1939 |
| 1939 Royal Visit | | 1358 to 513A | Winter - Spring 1939 |
| 2¢ Mufti | 6 | 585A | Fall 1939 |
| 2¢ Mufti | 7 & 8 | 596A | Fall 1939 |
| 3¢ Mufti | 12, 13 | 598A (Experimental Plates) | Fall 1939 |
| 2¢ Mufti | 9 & 10 | 600A (Experimental Plates) | Fall 1939 |
| 3¢ Mufti | 14, 15 | 674A | Fall 1939 |
| 2¢ Mufti | 11 | 810A | 1940 |
| 2¢ Mufti | 12 | 812A | 1940 |
| 2¢ Mufti | 13 | 818A | 1940 |
| 3¢ Mufti | 16 & 17 | 844A | 1940 |
| 1¢ Mufti | 9 | 847A | 1940 (was Fall 1939) |
| 2¢ Mufti | 14 | 927A | 1941 |
| 3¢ Mufti | 18 & 19 | 960A | 1941 |
| 1¢ Mufti | 10 & 11 | 968A | 1941 ???????? |
| 3¢ Mufti | 20 & 21 | 1003A | Early 1942 |
| 3¢ Mufti | 22 & 23 | 1006A | Early 1942 |
| 1¢ War Issue | | 1055AA | First Half 1942 |

1937 1¢, 2¢ & 3¢ Mufti Issues

Selvedge Type - Summary Data Grouped by Year1¢, 2¢ & 3¢ Mufti Plate Blocks Examined - Selvedge Type

| Plate No. | Normal | Narrow | Totals |
|-----------|--------|--------|--------|
| 1937 | 285 | 79 | 364 |
| 1938 | 205 | 0 | 205 |
| 1939 | 168 | 2 | 170 |
| 1940 | 104 | 0 | 104 |
| 1941 | 50 | 0 | 50 |
| 1942 | 30 | 0 | 30 |

1¢, 2¢ & 3¢ Mufti Plate Blocks Selvedge Type - Annual Distributions

| Plate No. | Normal | Narrow |
|-----------|--------|--------|
| 1937 | 22% | 78% |
| 1938 | - | 100% |
| 1939 | 1% | 99% |
| 1940 | - | 100% |
| 1941 | - | 100% |
| 1942 | - | 100% |

1937 1¢, 2¢ & 3¢ Mufti Issues

Paper Type - Summary Data Grouped by Year1¢, 2¢ & 3¢ Mufti Plate Blocks Examined - Paper Type

| Plate No. | Wove | Ribbed | Hatched | Regular |
|-----------|------|--------|---------|---------|
| 1937 | 17 | 170 | 87 | 90 |
| 1938 | 67 | 86 | 7 | 45 |
| 1939 | 103 | 46 | 3 | 18 |
| 1940 | 78 | 1 | 0 | 25 |
| 1941 | 41 | 0 | 0 | 9 |
| 1942 | 28 | 0 | 0 | 2 |

1¢, 2¢ & 3¢ Mufti Plate Blocks Paper Type - Annual Distributions

| Plate No. | Wove | Ribbed | Hatched | Regular |
|-----------|------|--------|---------|---------|
| 1937 | 5% | 47% | 24% | 25% |
| 1938 | 33% | 42% | 3% | 22% |
| 1939 | 61% | 27% | 2% | 11% |
| 1940 | 75% | 1% | - | 24% |
| 1941 | 82% | - | - | 18% |
| 1942 | 93% | - | - | 7% |

1937 1¢, 2¢ & 3¢ Mufti Issues

Gum Type - Summary Data Grouped by Year1¢, 2¢ & 3¢ Mufti Plate Blocks Examined - Gum Type

| Plate No. | Smooth | Mottled | Streaky |
|-----------|--------|---------|---------|
| 1937 | 11 | 253 | 100 |
| 1938 | 40 | 92 | 73 |
| 1939 | 113 | 40 | 17 |
| 1940 | 95 | 9 | - |
| 1941 | 48 | 2 | - |
| 1942 | 30 | - | - |

1¢, 2¢ & 3¢ Mufti Plate Blocks Gum Type - Annual Distributions

| Plate No. | Smooth | Mottled | Streaky |
|-----------|--------|---------|---------|
| 1937 | 3% | 70% | 27% |
| 1938 | 20% | 45% | 36% |
| 1939 | 66% | 24% | 10% |
| 1940 | 91% | 9% | - |
| 1941 | 96% | 4% | - |
| 1942 | 100% | - | - |

1937 1¢ Mufti Issue

Selvedge Type - Summary Data Base

| Plate No. | Control No. | Year | Selvedge | |
|-----------|-------------|------|----------|--------|
| | | | Normal | Narrow |
| 1 | 906 | 1937 | 11 | 23 |
| 2 | 906 | 1937 | 16 | 16 |
| 3 | 906 | 1937 | 26 | 12 |
| 4 | 906 | 1937 | 19 | - |
| 5 | 1263 | 1938 | 18 | - |
| 6 | 1324 | 1939 | 20 | - |
| 7 | 1329 | 1939 | 14 | - |
| 8 | 1329 | 1939 | 15 | 1 |
| 9 | 847A | 1940 | 15 | - |
| 10 | 968A | 1941 | 4 | - |
| 11 | 968A | 1941 | 5 | - |

1937 1¢ Mufti Issue

Paper Type - Summary Data Base

| Plate No. | Control No. | Year | Papers | | | |
|-----------|-------------|------|--------|--------|---------|---------|
| | | | Wove | Ribbed | Hatched | Regular |
| 1 | 906 | 1937 | - | 6 | 12 | 16 |
| 2 | 906 | 1937 | - | 4 | 16 | 12 |
| 3 | 906 | 1937 | 4 | 15 | 12 | 7 |
| 4 | 906 | 1937 | 6 | 7 | 6 | - |
| 5 | 1263 | 1938 | 8 | 2 | 8 | 8 |
| 6 | 1324 | 1939 | 12 | 4 | - | 1 |
| 7 | 1329 | 1939 | 5 | 5 | 3 | 4 |
| 8 | 1329 | 1939 | 6 | 6 | - | 4 |
| 9 | 847A | 1940 | 10 | - | - | 5 |
| 10 | 968A | 1941 | 4 | - | - | - |
| 11 | 968A | 1941 | 5 | - | - | - |

1937 1¢ Mufti Issue

Gum Type - Summary Data Base

| Plate No. | Control No. | Year | Gums | | |
|-----------|-------------|------|--------|---------|---------|
| | | | Smooth | Mottled | Streaky |
| 1 | 906 | 1937 | 9 | 7 | 18 |
| 2 | 906 | 1937 | - | 19 | 13 |
| 3 | 906 | 1937 | 1 | 0 | 37 |
| 4 | 906 | 1937 | - | 10 | 9 |
| 5 | 1263 | 1938 | 4 | 12 | 2 |
| 6 | 1324 | 1939 | 5 | 9 | 6 |
| 7 | 1329 | 1939 | 5 | 4 | 5 |
| 8 | 1329 | 1939 | 8 | 2 | 6 |
| 9 | 847A | 1940 | 10 | 5 | - |
| 10 | 968A | 1941 | 4 | - | - |
| 11 | 968A | 1941 | 5 | - | - |

1937 2¢ Mufti Issue

Selvedge Type - Summary Data Base

| Plate No. | Control No. | Year | Selvedge | |
|-----------|-------------|------|----------|--------|
| | | | Normal | Narrow |
| 1 | 907 | 1937 | 23 | 1 |
| 2 | 907 | 1937 | 24 | - |
| 3 | 907 | 1937 | 18 | 10 |
| 4 | 907 | 1937 | 29 | 7 |
| 5 | 964 | 1937 | 25 | 7 |
| 6 | 585A | 1939 | 10 | - |
| 7 | 596A | 1939 | 8 | - |
| 8 | 596A | 1939 | 29 | - |
| 9 * | 600A | 1939 | 10 | - |
| 10 * | 600A | 1939 | 12 | - |
| 11 | 810A | 1940 | 19 | - |
| 12 | 812A | 1940 | 7 | - |
| 13 | 818A | 1940 | 19 | - |
| 14 | 927A | 1941 | 17 | - |

* Plates 9 & 10 - Experimental Plates of six panes of 100 stamps

1937 2¢ Mufti Issue

Paper Type - Summary Data Base

| Plate No. | Control No. | Year | Papers | | | |
|-----------|-------------|------|--------|--------|---------|---------|
| | | | Wove | Ribbed | Hatched | Regular |
| 1 | 907 | 1937 | - | 20 | 4 | - |
| 2 | 907 | 1937 | - | 16 | 1 | 7 |
| 3 | 907 | 1937 | 3 | 7 | 7 | 1 |
| 4 | 907 | 1937 | 3 | 18 | 6 | 9 |
| 5 | 964 | 1937 | 1 | 18 | 5 | 8 |
| 6 | 585A | 1939 | 1 | 5 | - | 4 |
| 7 | 596A | 1939 | 2 | 6 | - | - |
| 8 | 596A | 1939 | 17 | 7 | - | 5 |
| 9 | 600A | 1939 | 10 | - | - | - |
| 10 | 600A | 1939 | 12 | - | - | - |
| 11 | 810A | 1940 | 18 | - | - | 1 |
| 12 | 812A | 1940 | 7 | - | - | 0 |
| 13 | 818A | 1940 | 11 | - | - | 8 |
| 14 | 927A | 1941 | 14 | - | - | 3 |

* Plates 9 & 10 - Experimental Plates of six panes of 100 stamps

1937 2¢ Mufti Issue

Gum Type - Summary Data Base

| Plate No. | Control No. | Year | Gums | | |
|-----------|-------------|------|--------|---------|---------|
| | | | Smooth | Mottled | Streaky |
| 1 | 907 | 1937 | - | 24 | - |
| 2 | 907 | 1937 | - | 21 | 3 |
| 3 | 907 | 1937 | - | 28 | - |
| 4 | 907 | 1937 | 1 | 25 | 10 |
| 5 | 964 | 1937 | - | 23 | - |
| 6 | 585A | 1939 | - | 10 | - |
| 7 | 596A | 1939 | - | 8 | - |
| 8 | 596A | 1939 | 22 | 7 | - |
| 9 | 600A | 1939 | 10 | - | - |
| 10 | 600A | 1939 | 12 | - | - |
| 11 | 810A | 1940 | 18 | 1 | - |
| 12 | 812A | 1940 | 7 | - | - |
| 13 | 818A | 1940 | 19 | - | - |
| 14 | 927A | 1941 | 15 | 2 | - |

* Plates 9 & 10 - Experimental Plates of six panes of 100 stamps

1937 3¢ Mufti Issue

Selvedge Type - Summary Data Base

| Plate No. | Control No. | Year | Selvedge | |
|-----------|-------------|------|----------|--------|
| | | | Normal | Narrow |
| 1 | 905 | 1937 | 38 | - |
| 2 | 905 | 1937 | 27 | 3 |
| 3 | 905 | 1937 | 12 | - |
| 4 | 905 | 1937 | 17 | - |
| 5 | 1048 | 1938 | 20 | - |
| 6 | 1048 | 1938 | 18 | - |
| 7 | 1053 | 1938 | 23 | - |
| 8 | 1053 | 1938 | 23 | - |
| 9 | 1256 | 1938 | 43 | - |
| 10 | 1256 | 1938 | 38 | - |
| 11 | 1278 | 1938 | 22 | - |
| 12 | 598A | 1939 | 8 | - |
| 13 | 598A | 1939 | 8 | - |
| 14 | 674A | 1939 | 16 | - |
| 15 | 674A | 1939 | 16 | 1 |
| 16 | 844A | 1940 | 26 | - |
| 17 | 844A | 1940 | 18 | - |
| 18 | 960A | 1941 | 13 | - |
| 19 | 960A | 1941 | 11 | - |
| 20 | 1003A | 1942 | 6 | - |
| 21 | 1003A | 1942 | 9 | - |
| 22 | 1006A | 1942 | 8 | - |
| 23 | 1006A | 1942 | 7 | - |

* Plates 12 & 13 - Experimental Plates of six panes of 100 stamps

1937 3¢ Mufti Issue

Paper Type - Summary Data Base

| Plate No. | Control No. | Year | Papers | | | |
|-----------|-------------|------|--------|--------|---------|---------|
| | | | Wove | Ribbed | Hatched | Regular |
| 1 | 905 | 1937 | - | 21 | 13 | 4 |
| 2 | 905 | 1937 | - | 23 | - | 7 |
| 3 | 905 | 1937 | - | 0 | 5 | 7 |
| 4 | 905 | 1937 | - | 15 | - | 2 |
| 5 | 1048 | 1938 | 1 | 10 | - | 9 |
| 6 | 1048 | 1938 | - | 13 | - | 5 |
| 7 | 1053 | 1938 | 1 | 16 | - | 6 |
| 8 | 1053 | 1938 | 1 | 12 | 7 | 3 |
| 9 | 1256 | 1938 | 23 | 16 | 0 | 4 |
| 10 | 1256 | 1938 | 21 | 11 | 0 | 6 |
| 11 | 1278 | 1938 | 12 | 6 | 0 | 4 |
| 12 | 598A | 1939 | 2 | 6 | - | - |
| 13 | 598A | 1939 | 1 | 7 | - | - |
| 14 | 674A | 1939 | 16 | - | - | - |
| 15 | 674A | 1939 | 19 | - | - | - |
| 16 | 844A | 1940 | 20 | 1 | - | 5 |
| 17 | 844A | 1940 | 12 | 0 | - | 6 |
| 18 | 960A | 1941 | 10 | - | - | 3 |
| 19 | 960A | 1941 | 8 | - | - | 3 |
| 20 | 1003A | 1942 | 6 | - | - | - |
| 21 | 1003A | 1942 | 7 | - | - | 2 |
| 22 | 1006A | 1942 | 8 | - | - | - |
| 23 | 1006A | 1942 | 7 | - | - | - |

* Plates 9 & 10 - Experimental Plates of six panes of 100 stamps

1937 3¢ Mufti Issue

Gum Type - Summary Data Base

| Plate No. | Control No. | Year | Gums | | |
|-----------|-------------|------|--------|---------|---------|
| | | | Smooth | Mottled | Streaky |
| 1 | 905 | 1937 | - | 38 | - |
| 2 | 905 | 1937 | - | 29 | 1 |
| 3 | 905 | 1937 | - | 12 | - |
| 4 | 905 | 1937 | - | 17 | - |
| 5 | 1048 | 1938 | - | 15 | 5 |
| 6 | 1048 | 1938 | - | 10 | 8 |
| 7 | 1053 | 1938 | - | 8 | 15 |
| 8 | 1053 | 1938 | - | 22 | 1 |
| 9 | 1256 | 1938 | 11 | 4 | 28 |
| 10 | 1256 | 1938 | 13 | 17 | 8 |
| 11 | 1278 | 1938 | 12 | 4 | 6 |
| 12 | 598A | 1939 | 8 | - | - |
| 13 | 598A | 1939 | 8 | - | - |
| 14 | 674A | 1939 | 16 | - | - |
| 15 | 674A | 1939 | 19 | - | - |
| 16 | 844A | 1940 | 23 | 3 | - |
| 17 | 844A | 1940 | 18 | - | - |
| 18 | 960A | 1941 | 13 | - | - |
| 19 | 960A | 1941 | 11 | - | - |
| 20 | 1003A | 1942 | 6 | - | - |
| 21 | 1003A | 1942 | 9 | - | - |
| 22 | 1006A | 1942 | 8 | - | - |
| 23 | 1006A | 1942 | 7 | - | - |

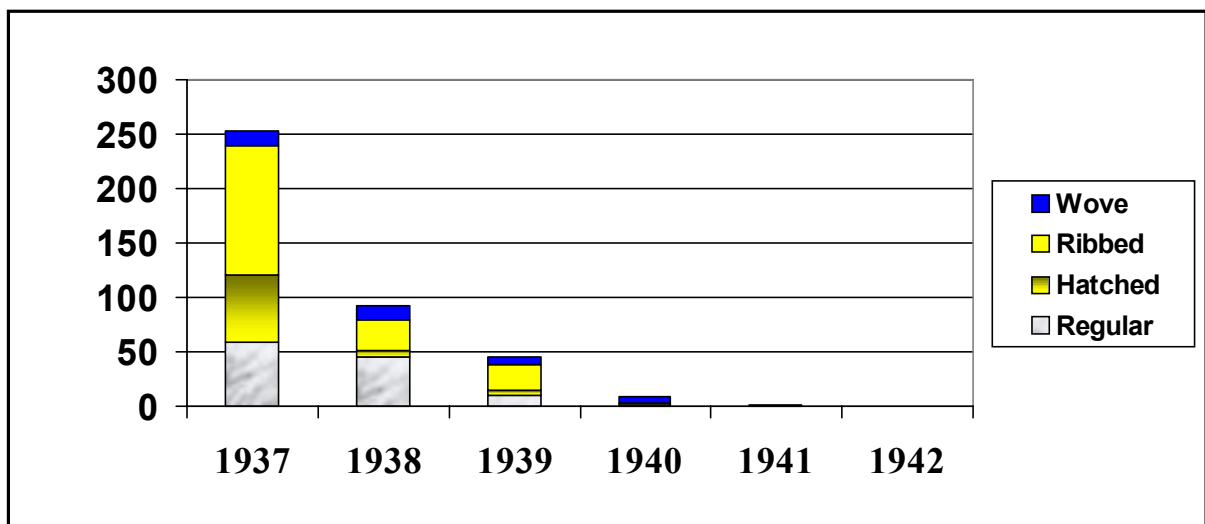
* Plates 12 & 13 - Experimental Plates of six panes of 100 stamps

1937 1¢, 2¢ & 3¢ Mufti Issues

Mottled Gum & Paper Types - Summary Data Grouped by Year

1¢, 2¢ & 3¢ Mufti Plate Blocks Examined - Mottled Gum & Paper Types

| Plate No. | Regular | Hatched | Ribbed | Wove |
|-----------|---------|---------|--------|------|
| 1937 | 59 | 61 | 120 | 13 |
| 1938 | 45 | 7 | 27 | 13 |
| 1939 | 11 | 3 | 24 | 8 |
| 1940 | 2 | 0 | 1 | 6 |
| 1941 | 2 | 0 | 0 | 0 |
| 1942 | 0 | 0 | 0 | 0 |

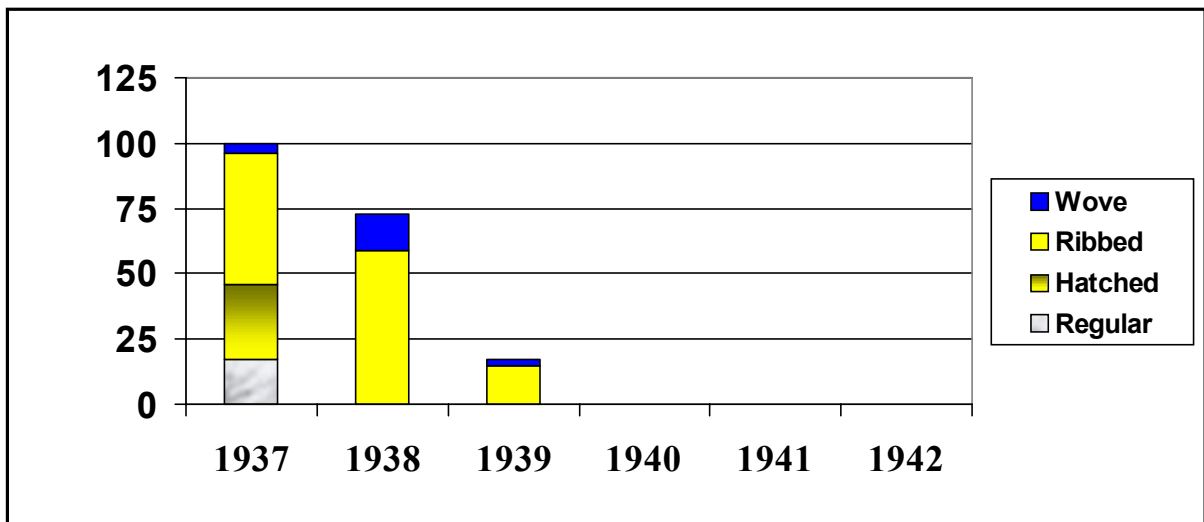


1937 1¢, 2¢ & 3¢ Mufti Issues

Streaky Gum & Paper Types - Summary Data Grouped by Year

1¢, 2¢ & 3¢ Mufti Plate Blocks Examined - Streaky Gum & Paper Types

| Plate No. | Regular | Hatched | Ribbed | Wove |
|-----------|---------|---------|--------|------|
| 1937 | 17 | 29 | 50 | 4 |
| 1938 | 0 | 0 | 59 | 14 |
| 1939 | 0 | 0 | 15 | 2 |
| 1940 | 0 | 0 | 0 | 0 |
| 1941 | 0 | 0 | 0 | 0 |
| 1942 | 0 | 0 | 0 | 0 |



1937 1¢, 2¢ & 3¢ Mufti Issues

Smooth (Clear) Gum & Paper Types - Summary Data Grouped by Year

1¢, 2¢ & 3¢ Mufti Plate Blocks Examined - Smooth (Clear) Gum & Paper Types

| Plate No. | Regular | Hatched | Ribbed | Wove |
|-----------|---------|---------|--------|------|
| 1937 | 11 | 0 | 0 | 0 |
| 1938 | 0 | 0 | 0 | 40 |
| 1939 | 7 | 0 | 7 | 93 |
| 1940 | 23 | 0 | 0 | 72 |
| 1941 | 7 | 0 | 0 | 41 |
| 1942 | 2 | 0 | 0 | 28 |

